

Preliminary Waterborne Commerce Statistics

For Calendar Year 2008

**Waterborne Commerce National Totals
And
Selected Inland Waterways
For Multiple Years**

**Institute for Water Resources
Navigation Data Center**

U.S. Army Corps of Engineers

**Waterborne Commerce Statistics Center
September 10, 2009**

Introduction

In order to provide waterborne commerce information as soon as possible, the Waterborne Commerce Statistics Center (WCSC) has prepared this summary document of preliminary waterborne commerce statistics for calendar year 2008. The foreign inbound and outbound data is preliminary import, export, and inbound/outbound in-transit data. The domestic national totals are based on calendar year 2008 data collected from vessel operating companies. Both the foreign and domestic data are subject to correction and may differ slightly from the final figures to be released later.

All graphs and tables (except page 1) show domestic tonnages (short tons). All graphs after page 1 include all internal tonnage, which is tonnage moving exclusively on waterways within the boundaries of the United States. The deep-draft sections of the Mississippi, the Columbia and the Gulf Intracoastal Waterway include domestic coastwise data as well. This coastwise tonnage travels on these internal waterways and also Coastwise (the oceans or the Gulf of Mexico). All the data for the current year (2008) is preliminary. The data of prior years are the final figures. Also, please note that rounding may result in commodity tonnages that do not add up to the totals for a waterway.

WCSC is also using the Internet to expedite release of statistics. Please visit our World Wide Web home page at:

www.iwr.usace.army.mil/ndc/wcsc/wcsc.htm.

There you will find the timeliest WCSC statistics including this report, quarterly estimates and our monthly internal traffic indicators.

Questions or comments may be communicated to:

Waterborne Commerce Statistics Center, USACE
P. O. Box 61280
New Orleans, LA 70161-1280
Telephone: (504) 862-1404
(504) 862-1441
Fax No.: (504) 862-1423
E-Mail: CEIWR-NDCWCSC.WEBMASTER@usace.army.mil

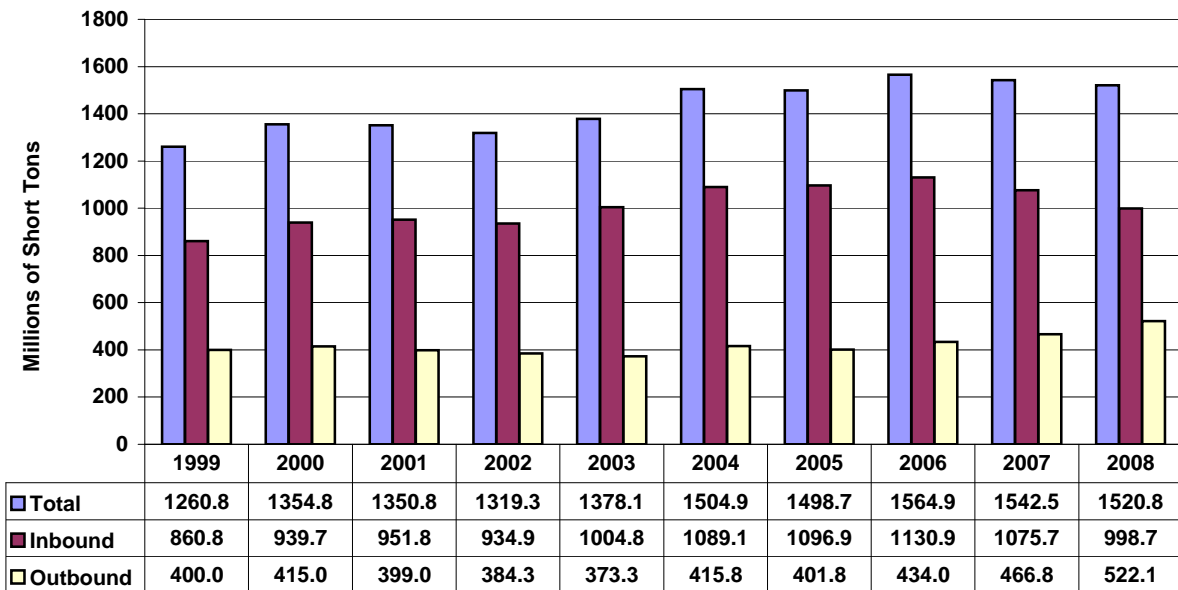
Table of Contents

Table/Graph	Page
Introduction	i
Table of Contents	ii
Explanation of Commodity Groups	iii
Foreign Waterborne Inbound and Outbound Traffic (1999-2008)	1
Domestic Waterborne Commerce of the U.S. – By Type Traffic (1999-2008)	1
Internal Waterways Tonnage Comparisons: 2008 vs 2007	2
Internal Waterways Tonnage Comparisons: Graph of Percent Change	3
National Internal Commodities	4
Total of Selected Waterways (1999-2008)	5
Allegheny River	6
Atchafalaya River	8
Atlantic Intracoastal Waterway	10
Big Sandy River	12
Black Warrior and Tombigbee Rivers	14
Columbia River	16
Cumberland River	18
Gulf Intracoastal Waterway	20
Illinois Waterway	22
Kanawha River	24
McClellan-Kerr Waterway	26
Mississippi River	28
Missouri River	30
Monongahela River	32
Ohio River	34
Snake River	36
Tennessee River	38
Tennessee-Tombigbee Waterway	40

Explanation of Commodity Groups

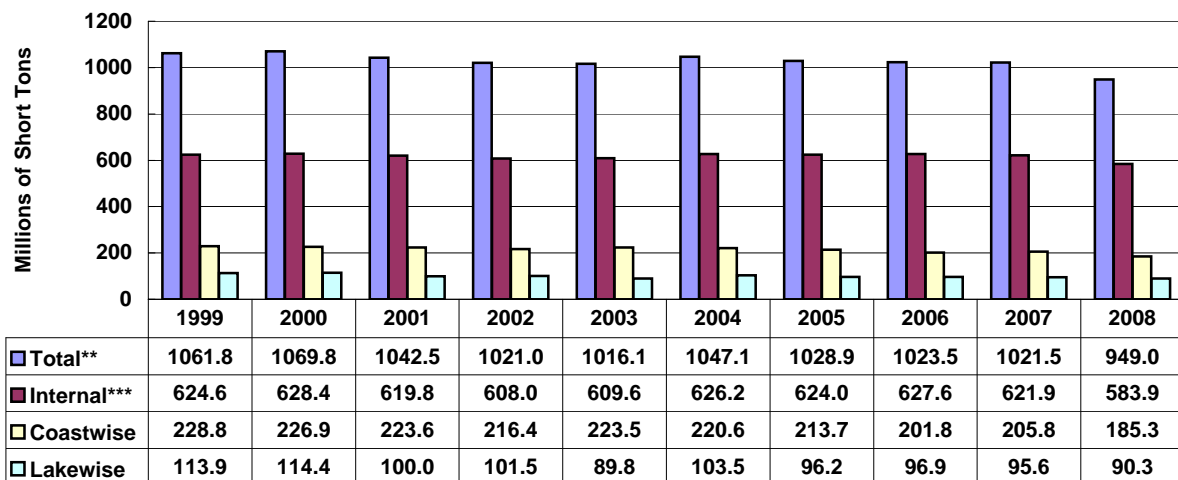
Coal:	Coal, lignite, and coke
Petro & Petro Products:	Petroleum and Petroleum Products
Chemicals:	Chemicals and fertilizers
Crude Materials:	Crude materials, inedible, such as: forest products, pulp, sand, gravel, stone, iron ore, marine shells, non-ferrous metallic ores, and sulphur
Manufactured Goods:	Primary manufactured goods, such as: paper and allied products, concrete, iron, steel, non-ferrous metals, and wood products
Food and Farm:	Food, grain, and farm products
Manufactured Equipment:	All manufactured equipment
Waste material:	Waste material, such as: garbage, landfill, sewage sludge, and waste water.
Other:	Commodity group not specifically listed in a table. (This will differ from table to table).

Foreign Waterborne Inbound and Outbound Traffic 1999-2008*, Millions of Short Tons



*Preliminary as of September 10, 2009.

Domestic Waterborne Commerce of the U.S. 1999-2008*, Millions of Short Tons, by Type of Traffic



*Preliminary as of September 10, 2009.

**Total also includes Intraport and Intra-territory traffic.

***Total Internal excludes waterway improvement materials, and beginning in 1996, excludes fish.

Domestic U.S. Waterborne Traffic

Annual Tonnage Comparisons: 2008* VS 2007

Millions of Short Tons

	CY07	CY08*	Percent Change
National Totals**			
Domestic	1021.5	949.0	-7.10%
Lakewise	95.6	90.3	-5.54%
Coastwise	205.8	185.3	-9.94%
Intraport	93.1	85.2	-8.42%
Intra-territory	5.1	4.2	-18.08%
Internal	621.9	583.9	-6.10%

National Internal Commodities

Coal	182.2	186.7	2.49%
Petroleum	164.8	149.2	-9.49%
Chemicals	51.0	45.4	-10.99%
Crude Materials	109.5	103.6	-5.37%
Manufactured Goods	27.0	25.0	-7.36%
Food and Farm	77.5	67.5	-12.84%
Manufactured Equipment	8.8	7.9	-10.17%
Other	1.2	1.2	3.71%

Waterways

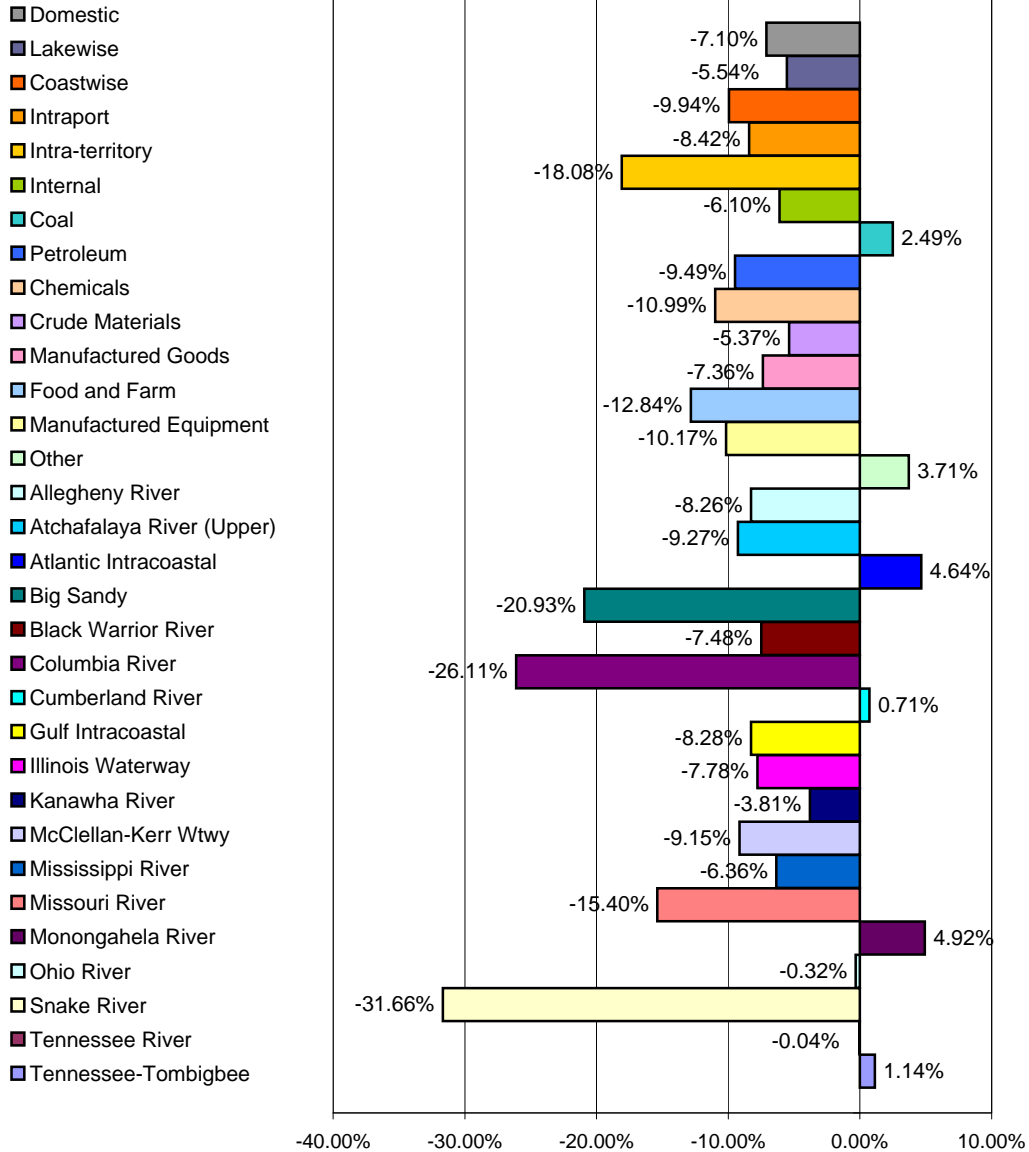
Allegheny River	2.7	2.5	-8.26%
Atchafalaya River (Upper)	10.9	9.8	-9.27%
Atlantic Intracoastal	2.5	2.6	4.64%
Big Sandy	21.9	17.3	-20.93%
Black Warrior River	21.1	19.5	-7.48%
Columbia River***	18.5	13.7	-26.11%
Cumberland River	22.5	22.7	0.71%
Gulf Intracoastal***	125.1	114.7	-8.28%
Illinois Waterway	41.1	37.9	-7.78%
Kanawha River	21.0	20.2	-3.81%
McClellan-Kerr Wtwy	12.1	11.0	-9.15%
Mississippi River***	313.3	293.4	-6.36%
Missouri River	6.7	5.7	-15.40%
Monongahela River	26.7	28.0	4.92%
Ohio River	230.8	230.1	-0.32%
Snake River	5.4	3.7	-31.66%
Tennessee River	49.5	49.4	-0.04%
Tennessee Tombigbee	6.2	6.3	1.14%

* Preliminary as of September 10, 2009.

**All National Totals exclude fish and waterway improvement materials.

***Includes domestic coastwise tonnage.

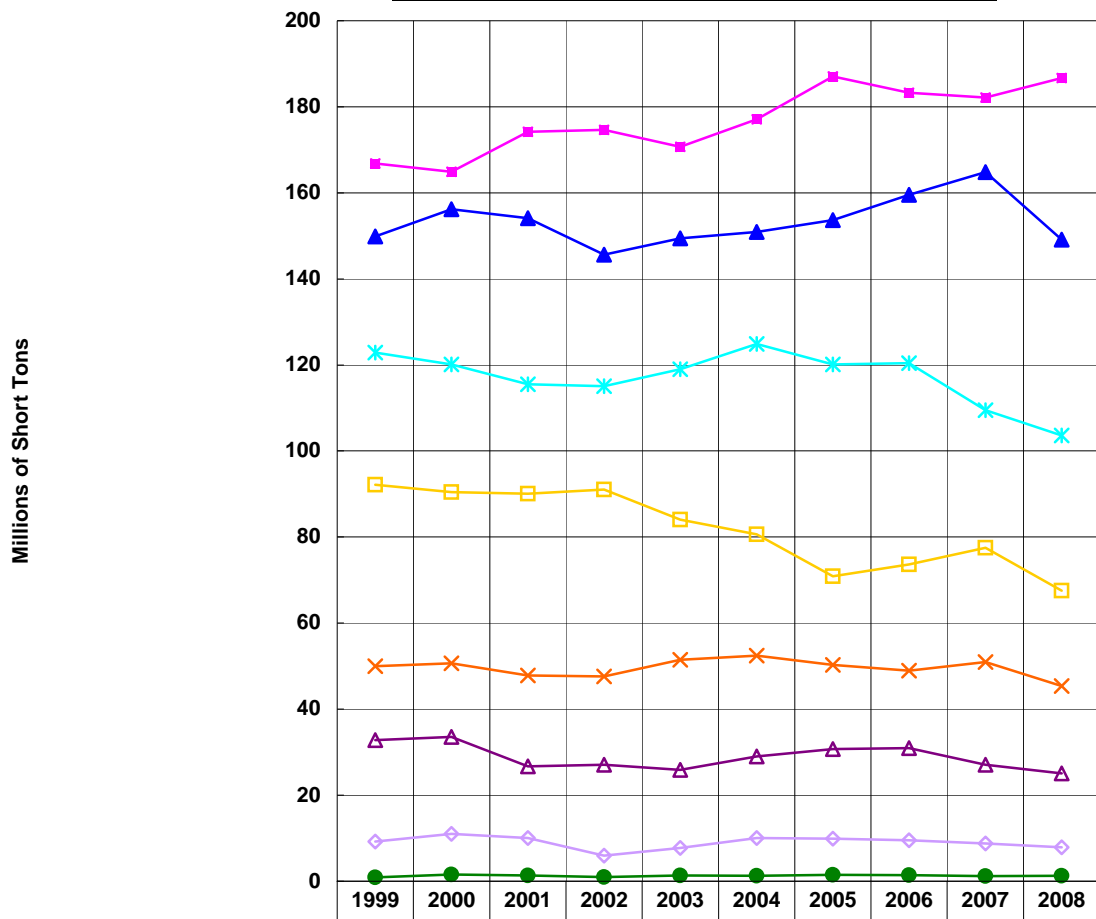
Domestic U.S. Waterborne Traffic Tonnage Comparisons: 2008* vs. 2007



*Preliminary as of September 10, 2009.
Waterway improvement materials and fish excluded from National Totals.

National Internal Commodities

1999-2008*, Millions of Short Tons, By Commodity

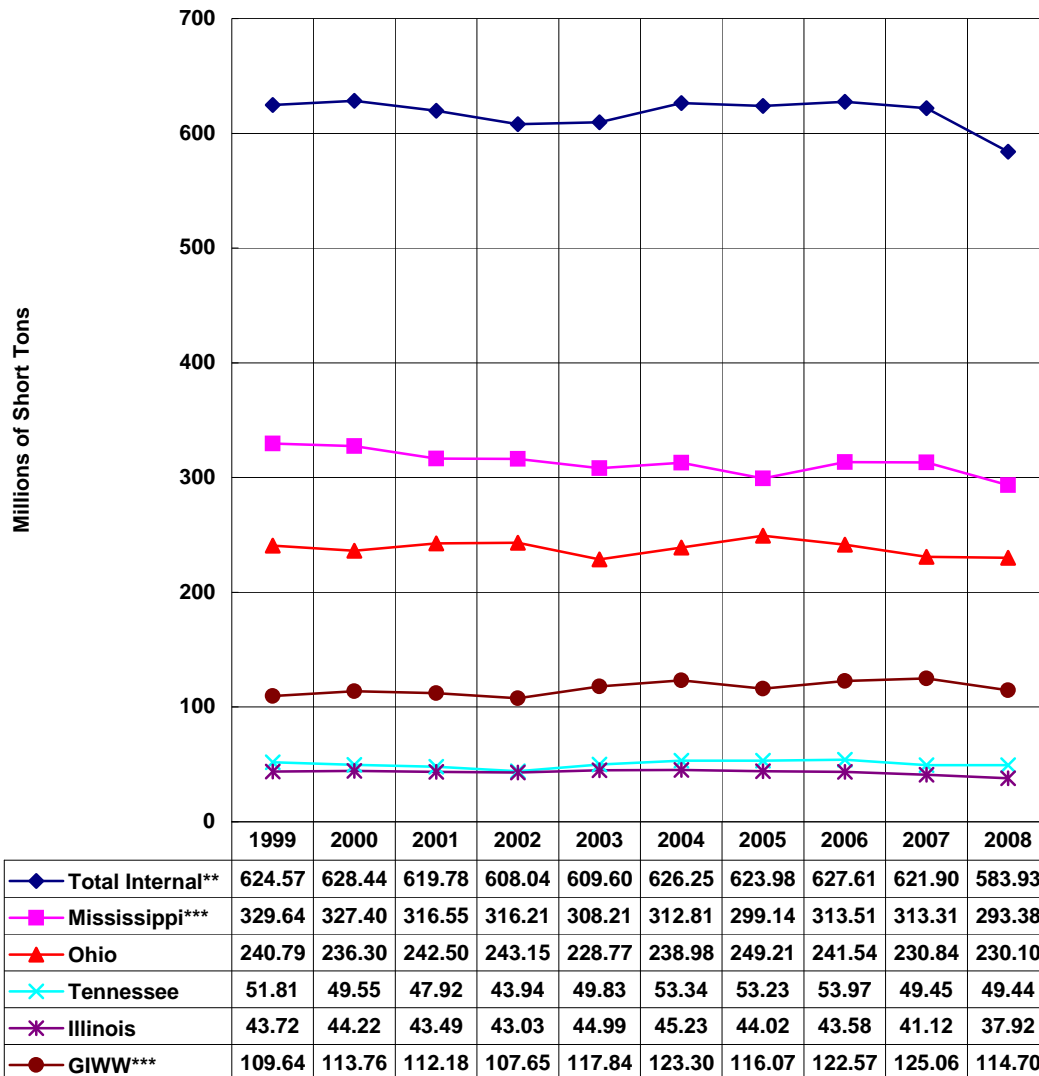


	1999	2000	2001	2002	2003	2004	2005	2006	2007	2008
Coal	166.79	164.90	174.21	174.64	170.70	177.06	187.03	183.24	182.16	186.70
Petroleum	149.86	156.19	154.10	145.65	149.46	150.93	153.63	159.54	164.80	149.16
Chemicals	50.01	50.67	47.80	47.61	51.49	52.46	50.27	48.94	50.96	45.36
Crude Materials	122.86	120.15	115.51	115.08	119.00	124.85	120.10	120.38	109.49	103.61
Manufactured Goods	32.81	33.51	26.73	27.09	25.91	28.98	30.73	30.92	27.04	25.05
Food and Farm	92.16	90.44	90.09	91.03	84.02	80.65	70.87	73.60	77.49	67.54
Manufactured Equipment	9.22	11.04	10.03	5.94	7.71	10.03	9.87	9.55	8.76	7.87
Other	0.86	1.54	1.32	1.00	1.30	1.29	1.47	1.44	1.19	1.24

*Preliminary as of September 10, 2009.

Commerce on Selected Waterways

Internal Traffic, 1999-2008*

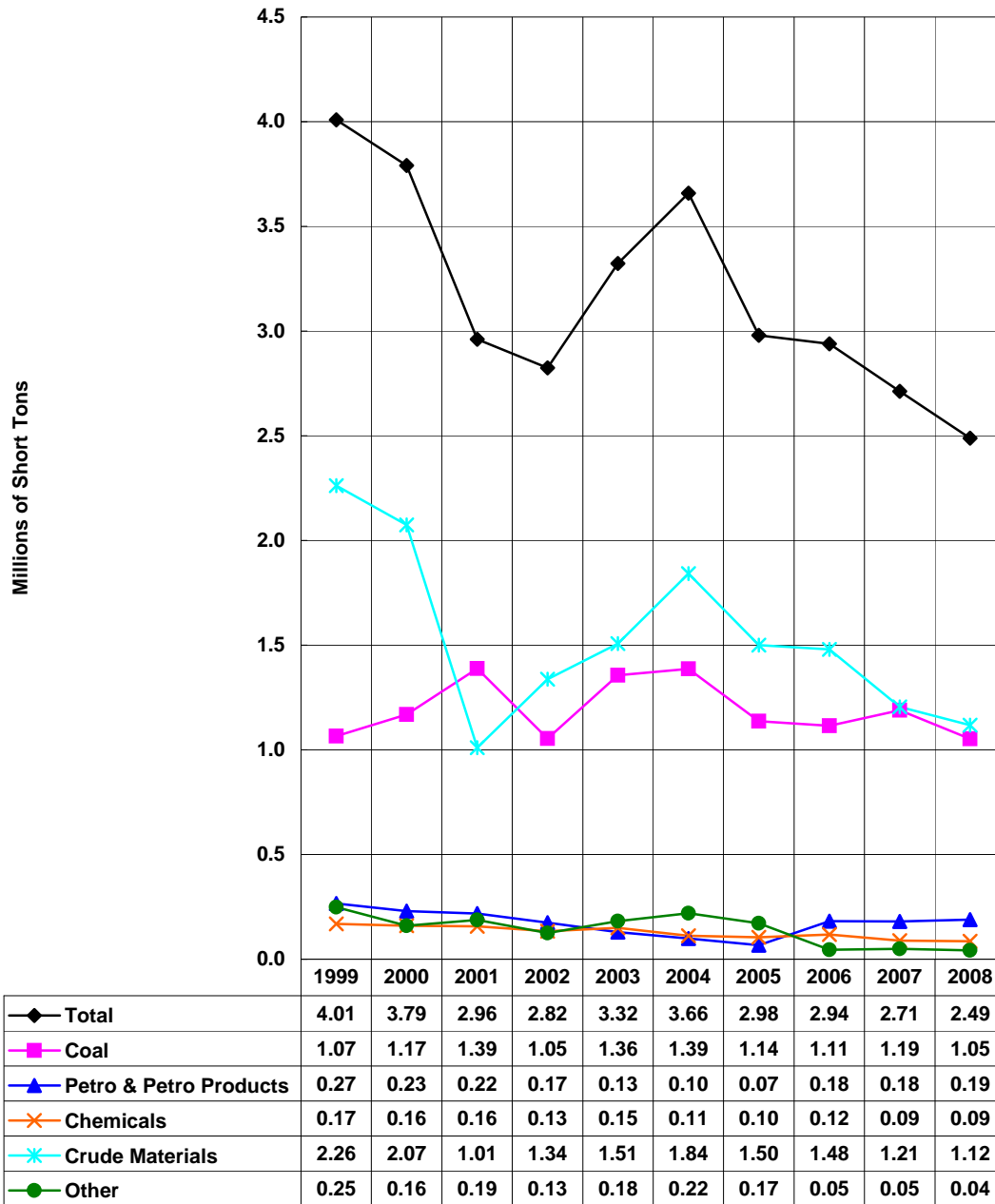


*Preliminary as of September 10, 2009.

**Total Internal excludes waterway improvement materials, and beginning in 1996, excludes fish.

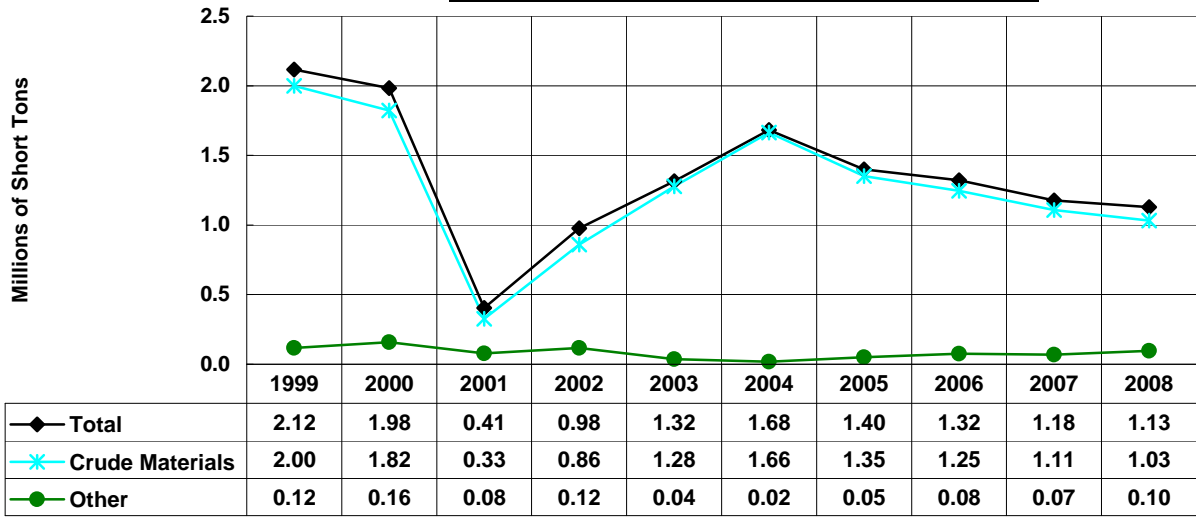
***Includes domestic coastwise tonnage.

Allegheny River - Totals 1999-2008*, Millions of Short Tons, By Commodity



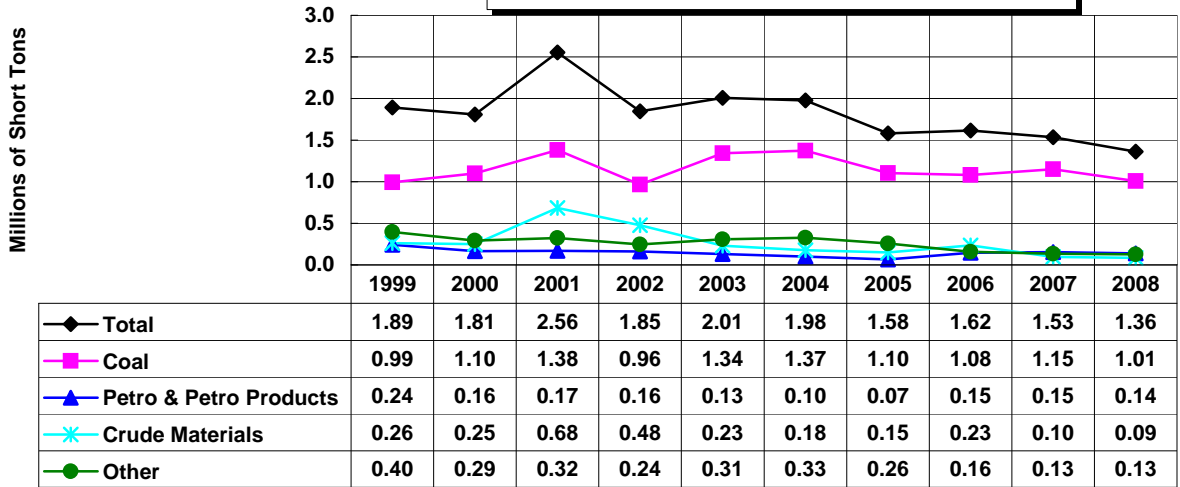
*Preliminary as of September 10, 2009.

Allegheny River - Downbound 1999-2008*, Millions of Short Tons, By Commodity



*Preliminary as of September 10, 2009.

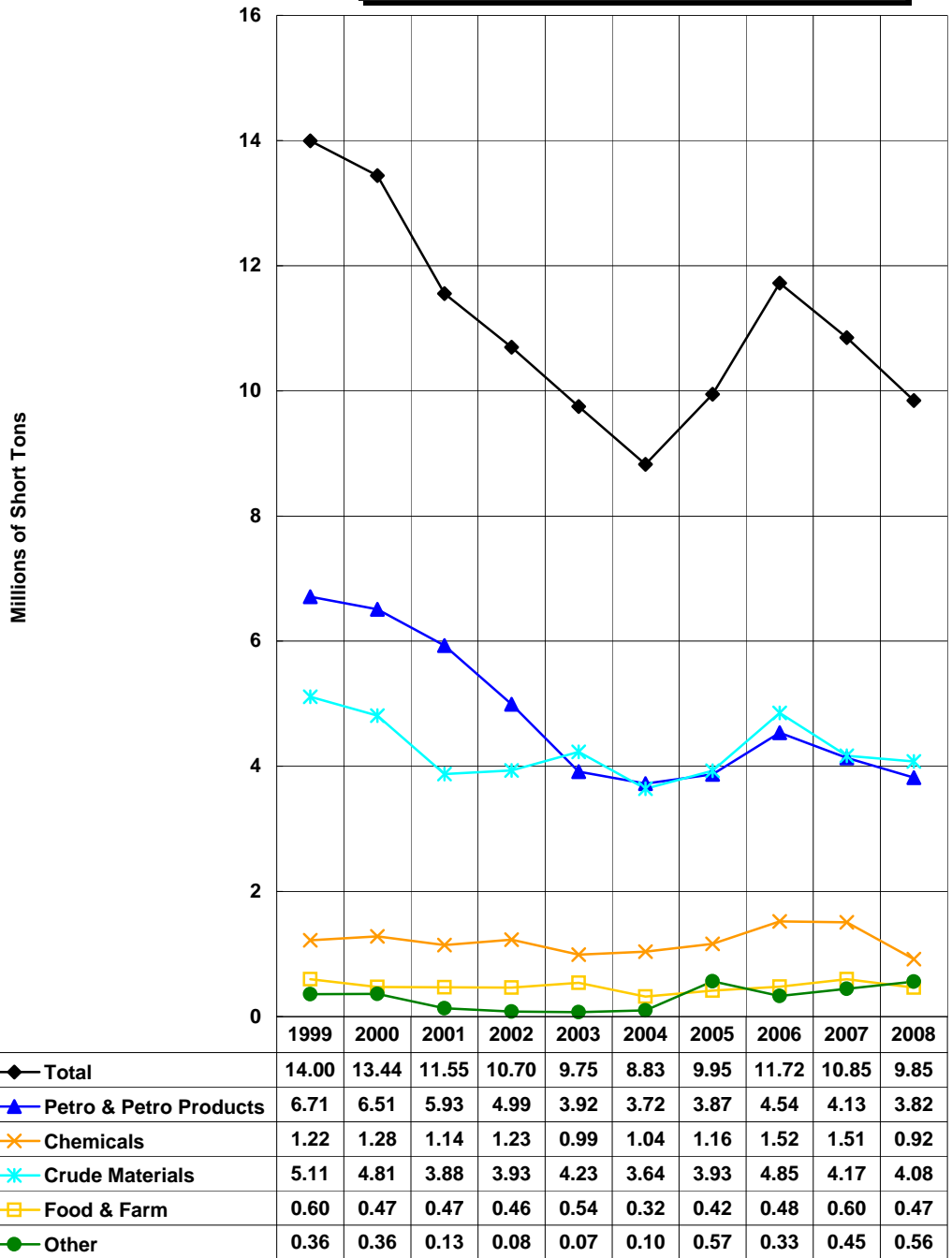
Allegheny River - Upbound 1999-2008*, Millions of Short Tons, By Commodity



*Preliminary as of September 10, 2009.

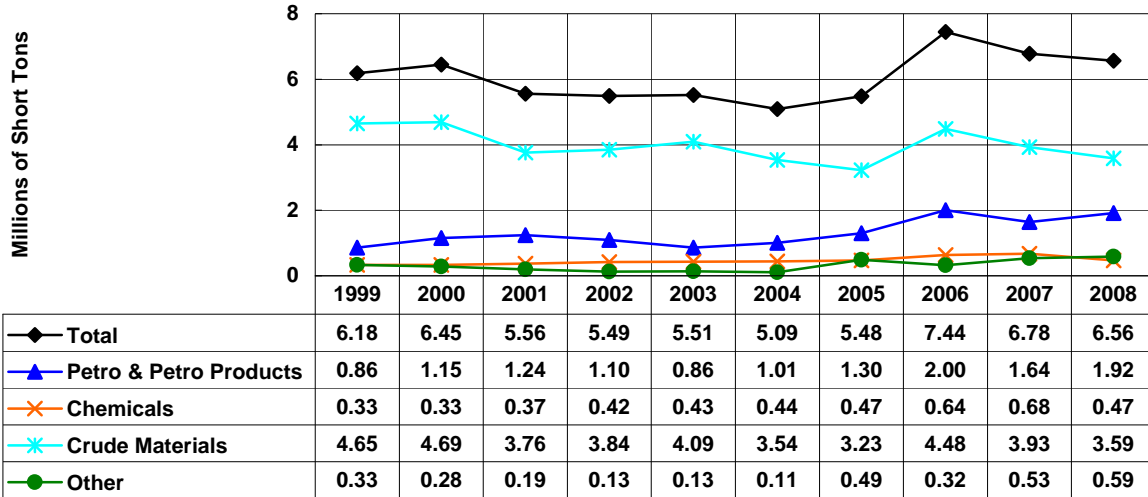
Upper Atchafalaya River - Totals

1999-2008*, Millions of Short Tons, By Commodity



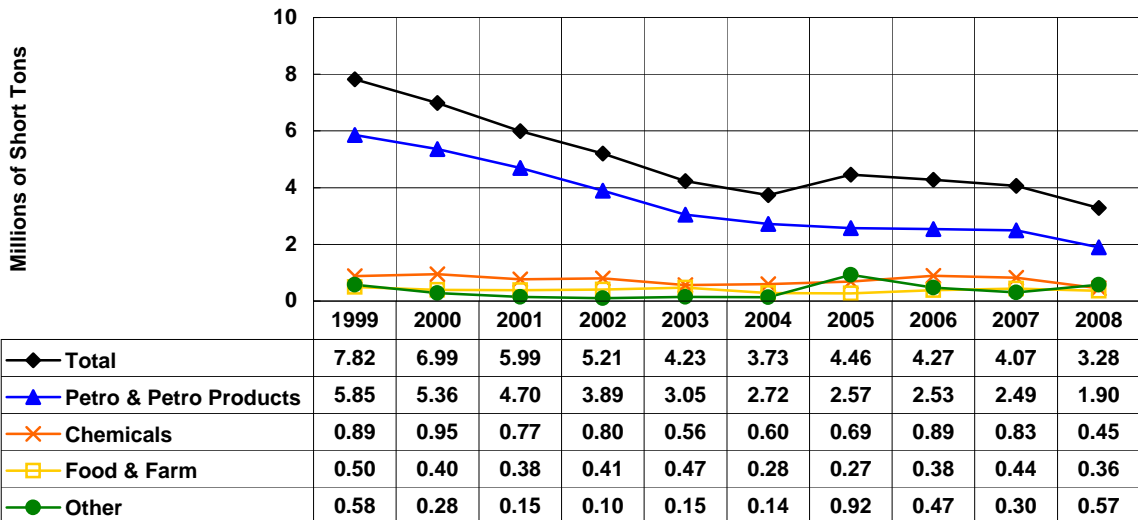
*Preliminary as of September 10, 2009.

Upper Atchafalaya River - Downbound 1999-2008*, Millions of Short Tons, By Commodity



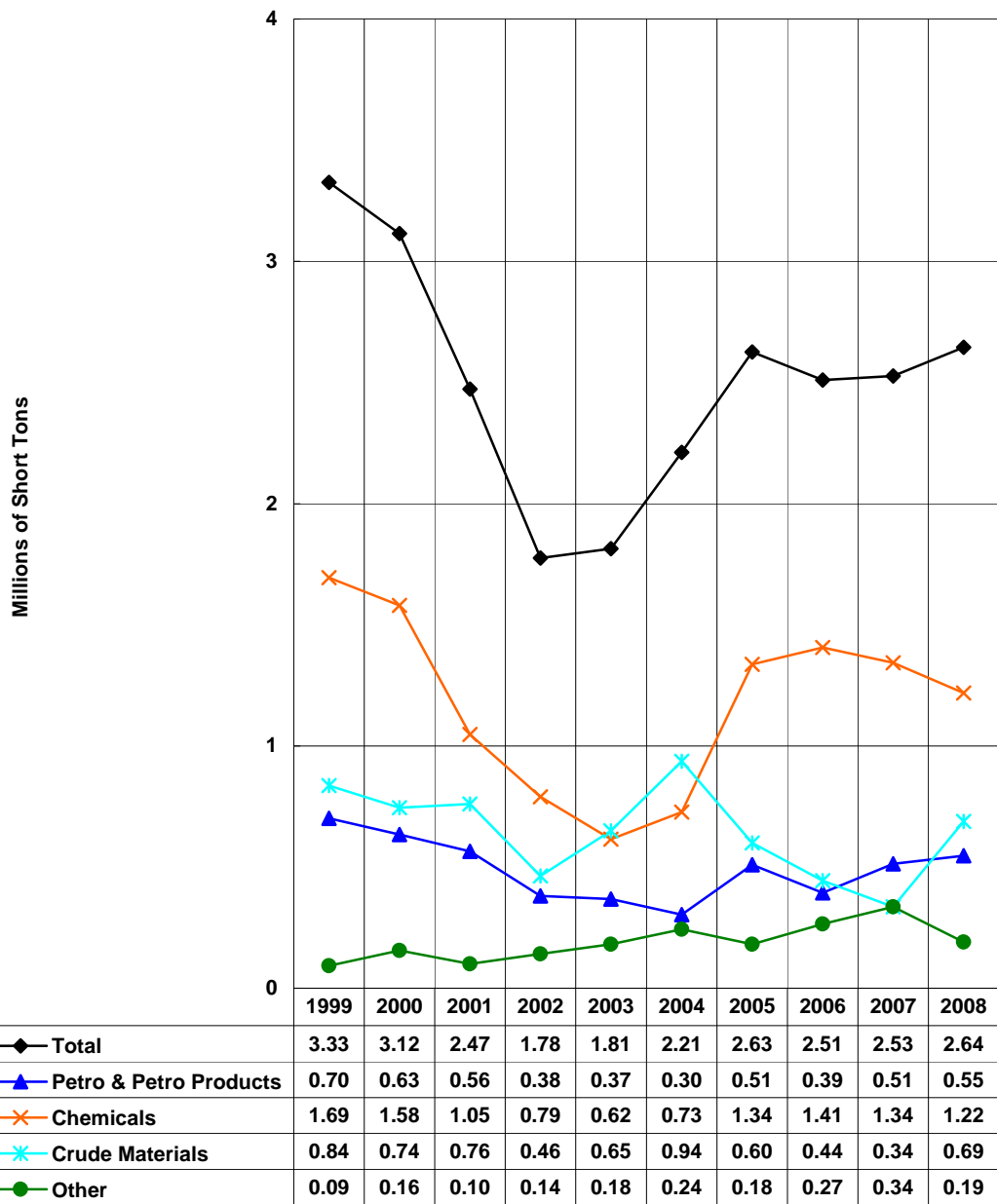
*Preliminary as of September 10, 2009.

Upper Atchafalaya River - Upbound 1999-2008*, Millions of Short Tons, By Commodity



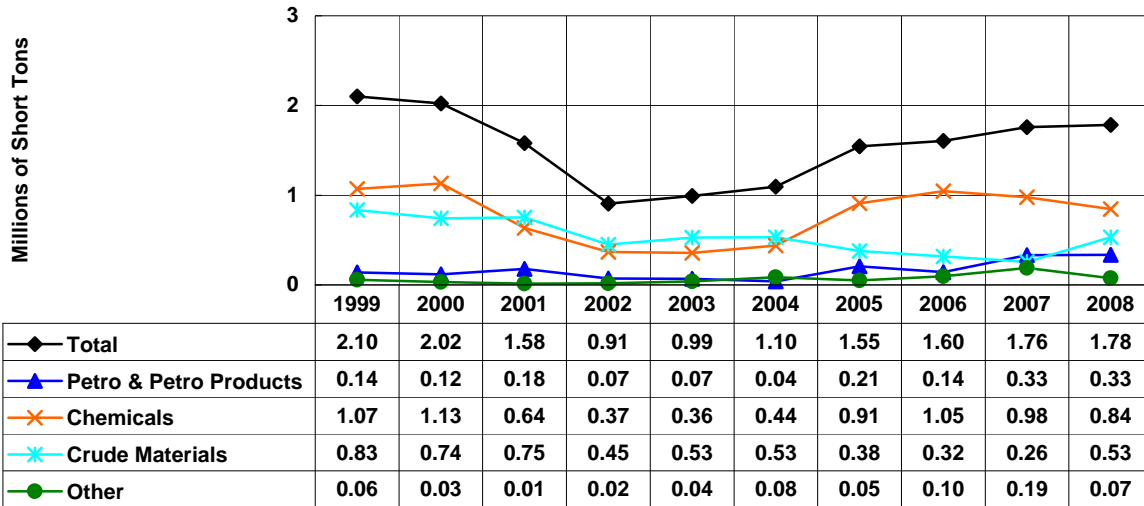
*Preliminary as of September 10, 2009.

Atlantic Intracoastal Waterway Totals 1999-2008*, Millions of Short Tons, By Commodity



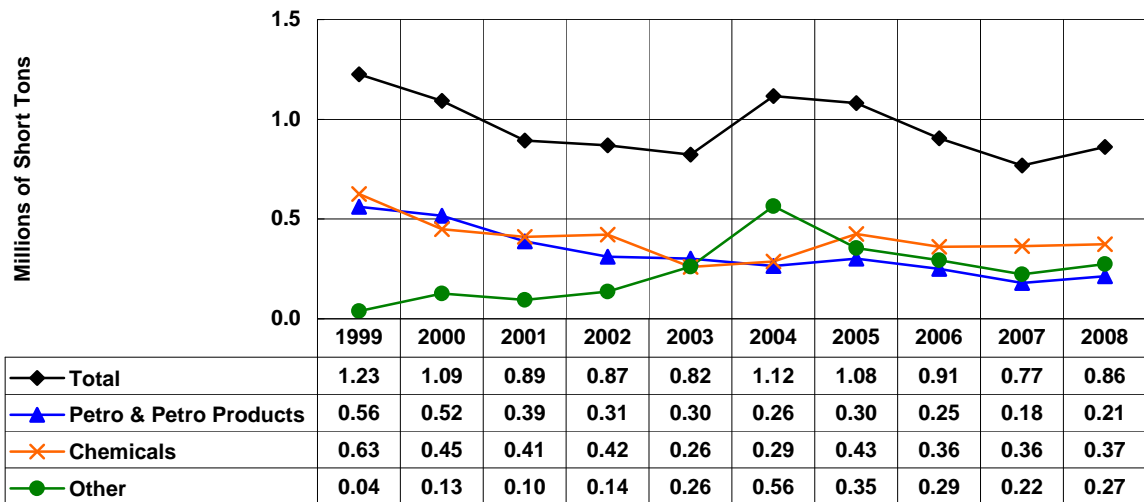
*Preliminary as of September 10, 2009.

Atlantic Intracoastal Waterway Southbound 1999-2008*, Millions of Short Tons, By Commodity



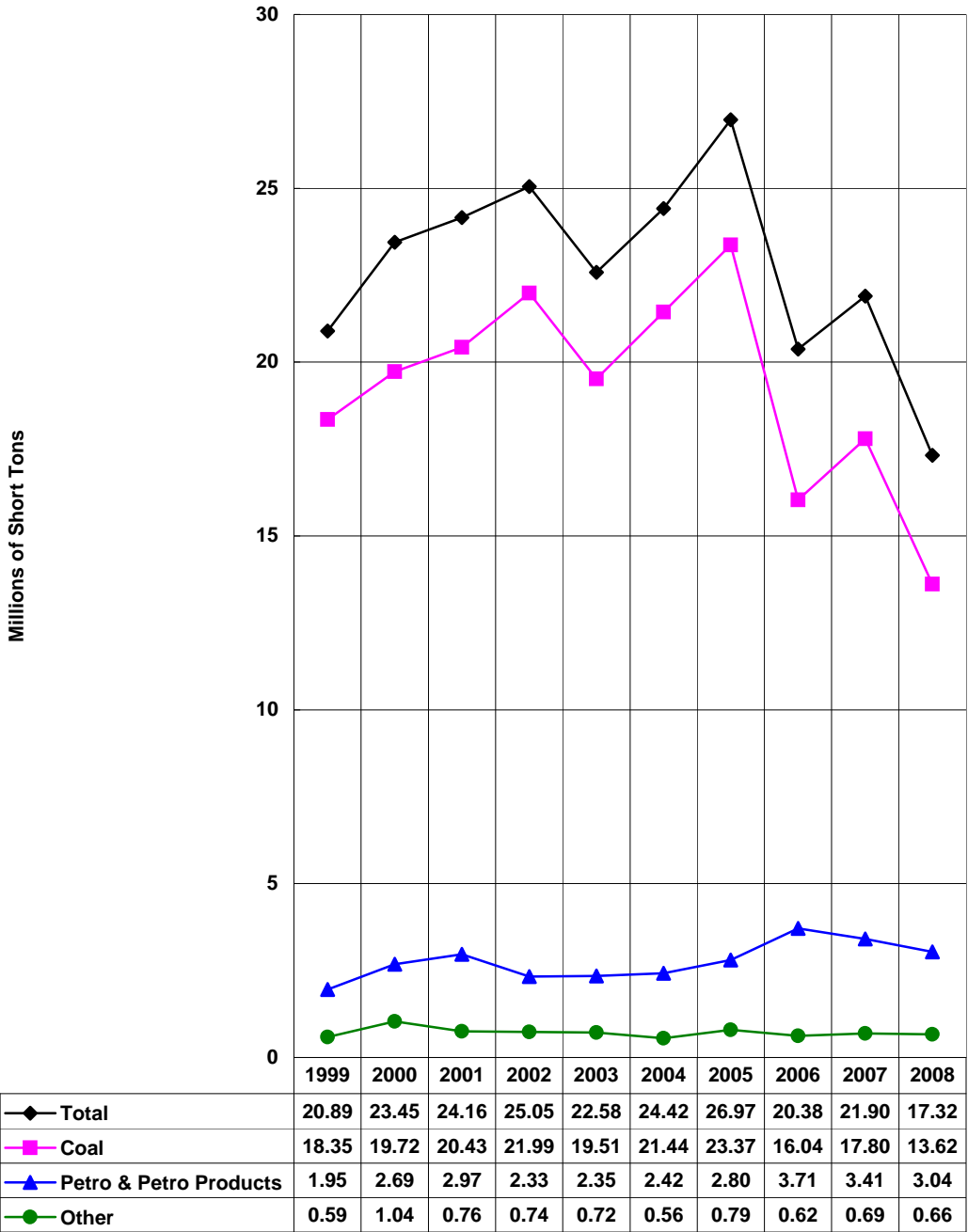
*Preliminary as of September 10, 2009.

Atlantic Intracoastal Waterway Northbound 1999-2008*, Millions of Short Tons, By Commodity



*Preliminary as of September 10, 2009.

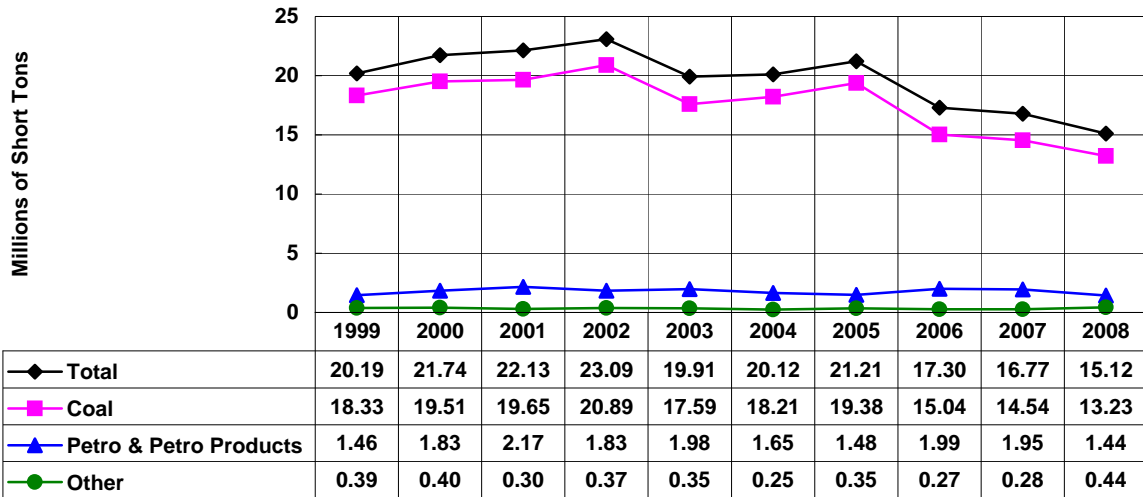
Big Sandy River - Totals
 1999-2008*, Millions of Short Tons, By Commodity



*Preliminary as of September 10, 2009.

Big Sandy River - Downbound

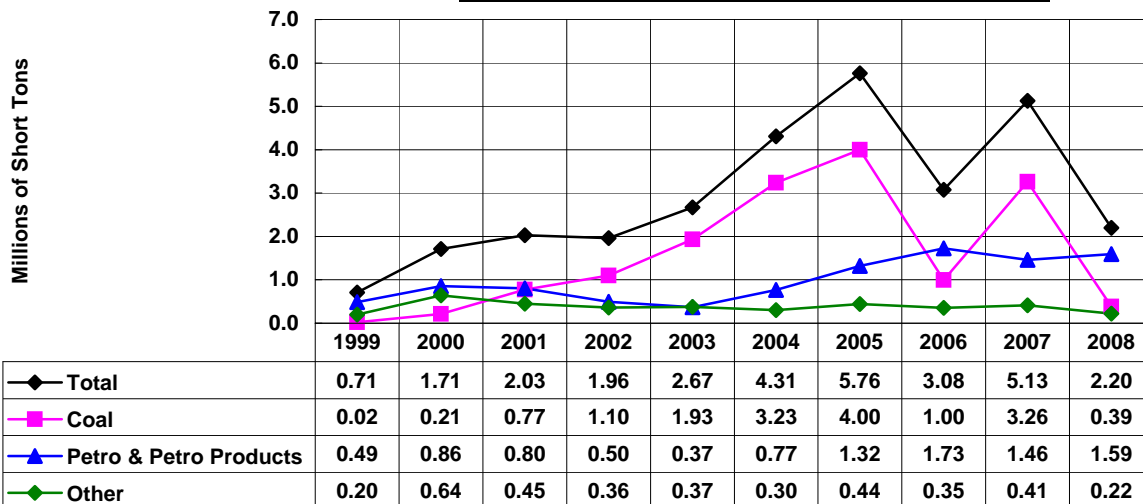
1999-2008*, Millions of Short Tons, By Commodity



*Preliminary as of Septmeber 10, 2009.

Big Sandy River - Upbound

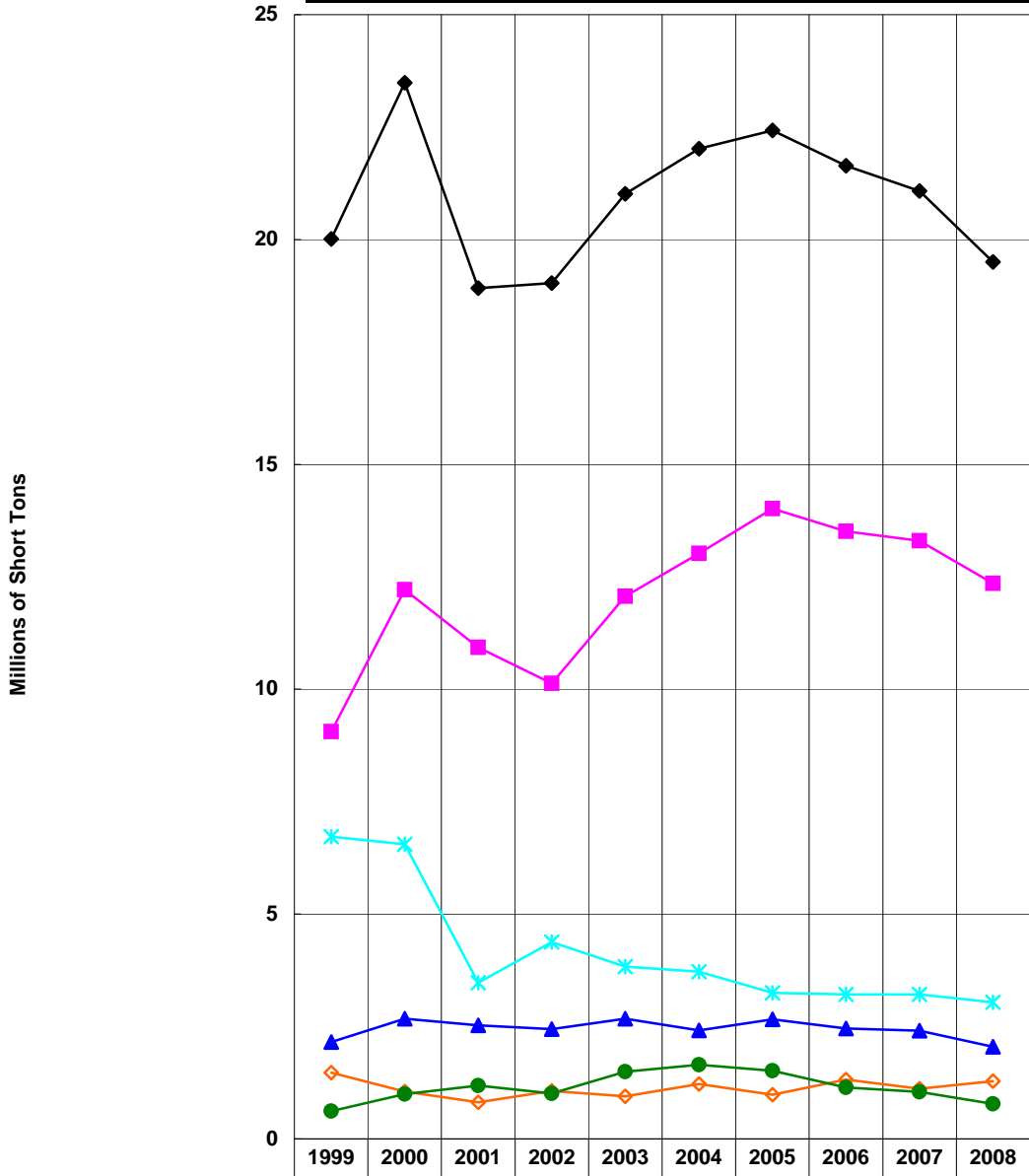
1999-2008*, Millions of Short Tons, By Commodity



*Preliminary as of September 10, 2009.

Black Warrior & Tombigbee Rivers Totals

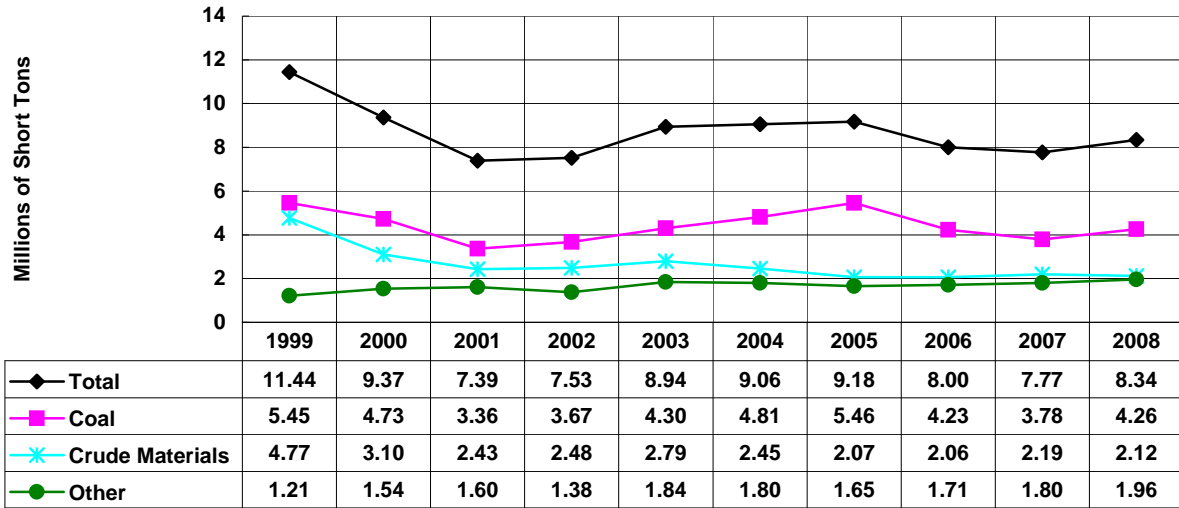
1999-2008*, Millions of Short Tons, By Commodity



	1999	2000	2001	2002	2003	2004	2005	2006	2007	2008
◆ Total	20.01	23.48	18.91	19.03	21.01	22.02	22.43	21.64	21.08	19.50
■ Coal	9.05	12.21	10.93	10.13	12.07	13.02	14.02	13.51	13.30	12.36
▲ Petro & Petro Products	2.15	2.68	2.53	2.44	2.67	2.41	2.66	2.45	2.41	2.05
* Crude Materials	6.72	6.55	3.47	4.38	3.83	3.72	3.25	3.21	3.21	3.04
◇ Manufactured Goods	1.47	1.05	0.81	1.07	0.95	1.22	0.98	1.32	1.11	1.28
● Other	0.62	1.00	1.18	1.01	1.49	1.65	1.52	1.15	1.05	0.78

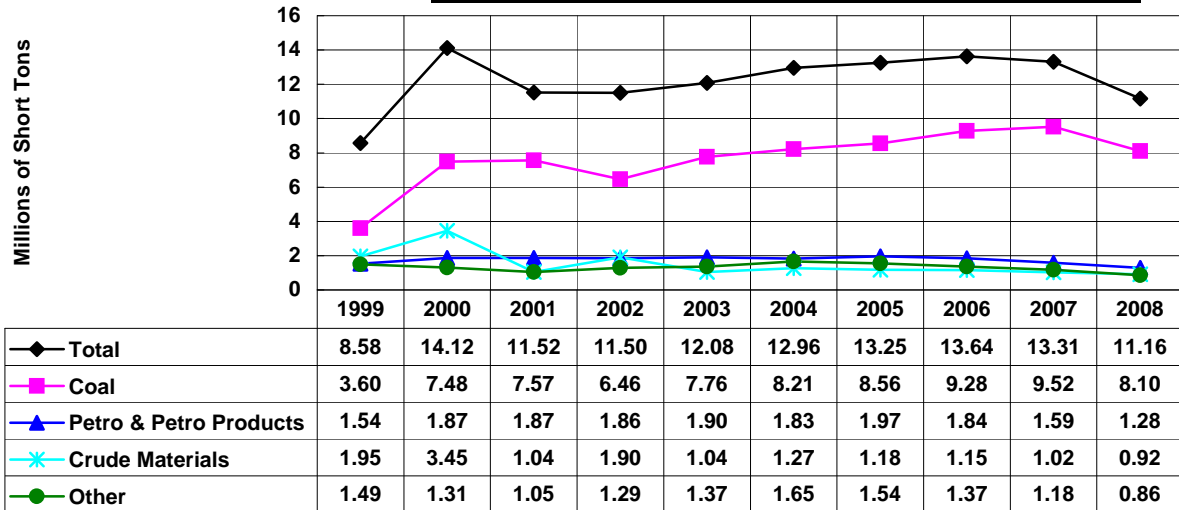
*Preliminary as of September 10, 2009.

Black Warrior & Tombigbee Rivers Downbound, 1999-2008*, Millions of Short Tons, By Commodity



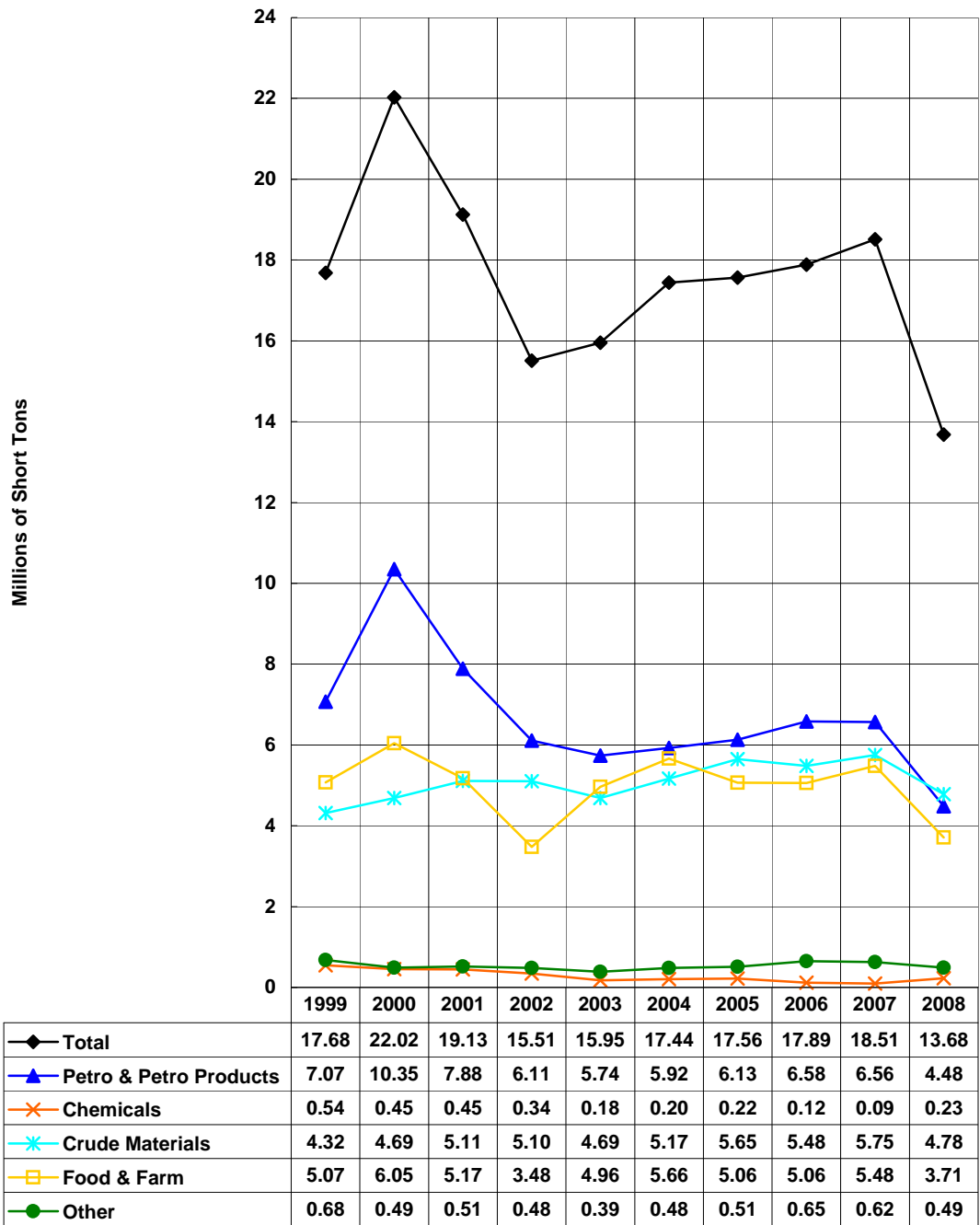
*Preliminary as of September 10, 2009.

Black Warrior & Tombigbee Rivers Upbound, 1999-2008*, Millions of Short Tons, By Commodity



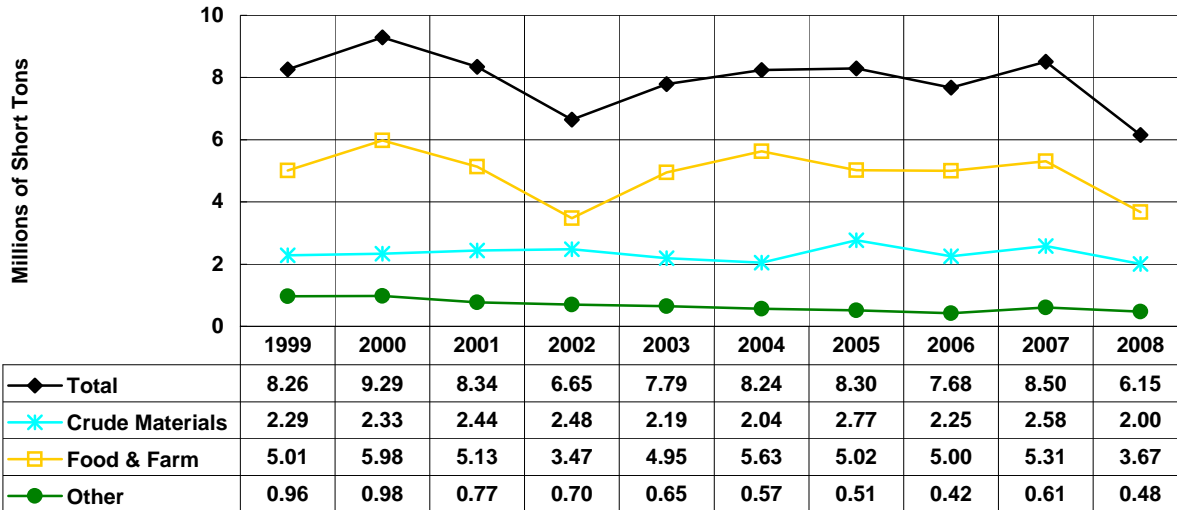
*Preliminary as of September 10, 2009.

Columbia River - Totals
1999-2008*, Millions of Short Tons, By Commodity



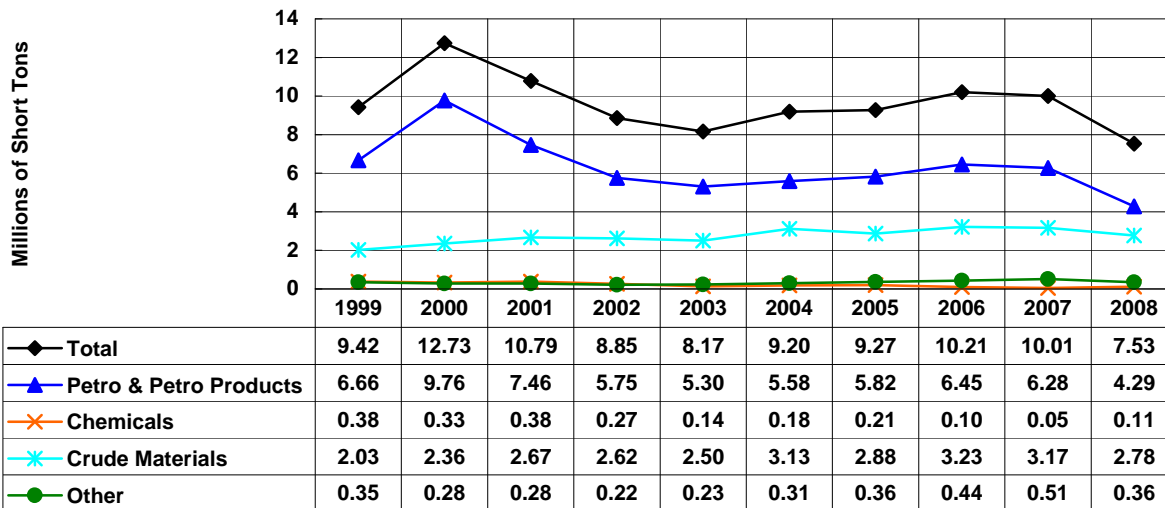
*Preliminary as of September 10, 2009.
Domestic tonnage only (including coastwise).

Columbia River - Downbound 1999-2008*, Millions of Short Tons, By Commodity



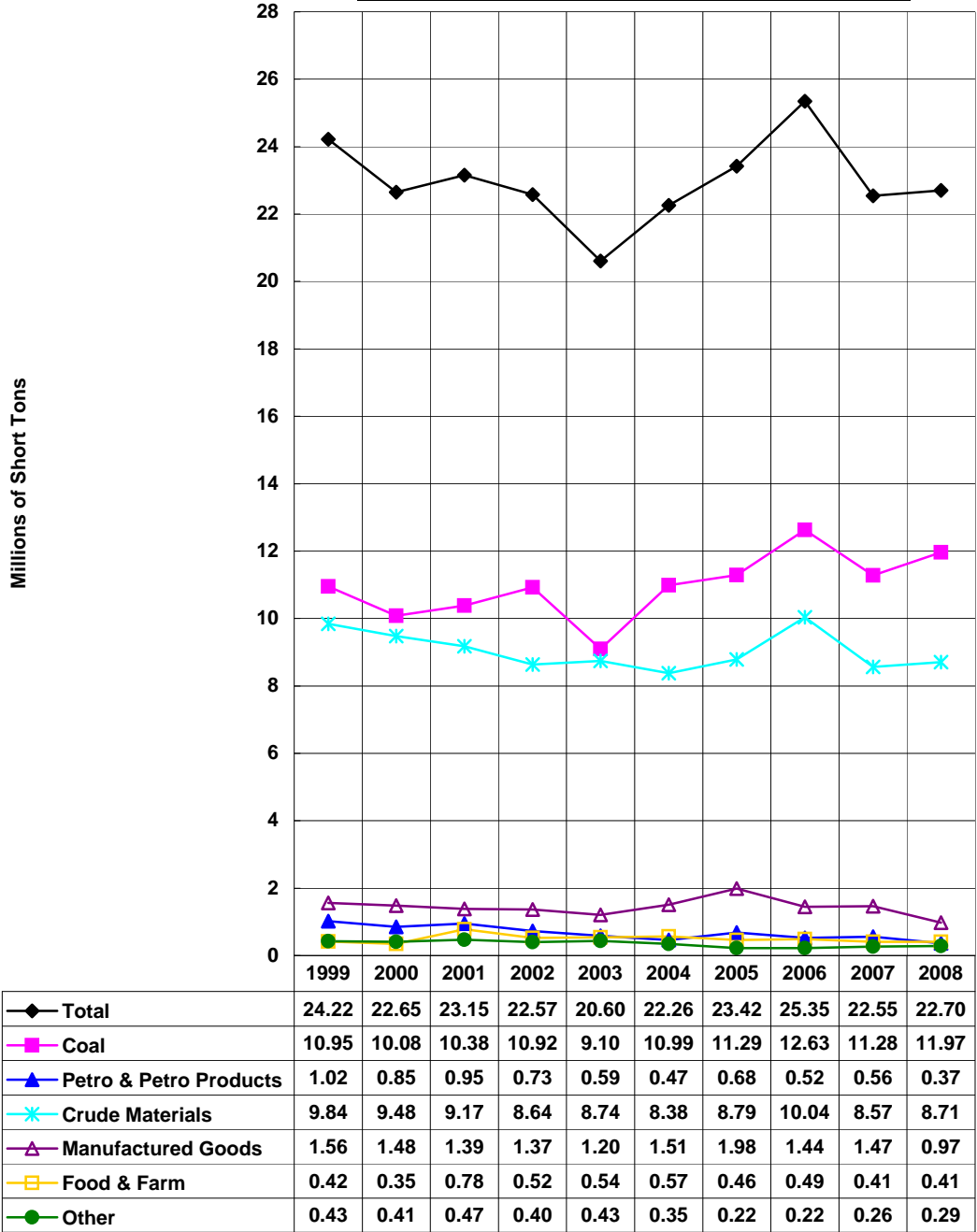
*Preliminary as of September 10, 2009.
Domestic tonnage only (including coastwise).

Columbia River - Upbound 1999-2008*, Millions of Short Tons, By Commodity



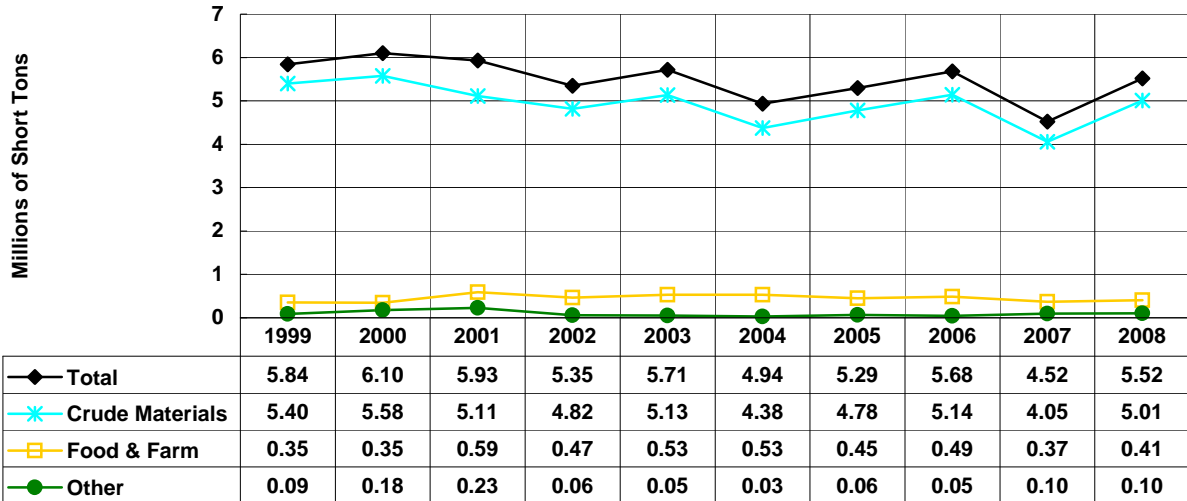
*Preliminary as of September 10, 2009.
Domestic tonnage only (including coastwise).

Cumberland River - Totals
 1999-2008*, Millions of Short Tons, By Commodity



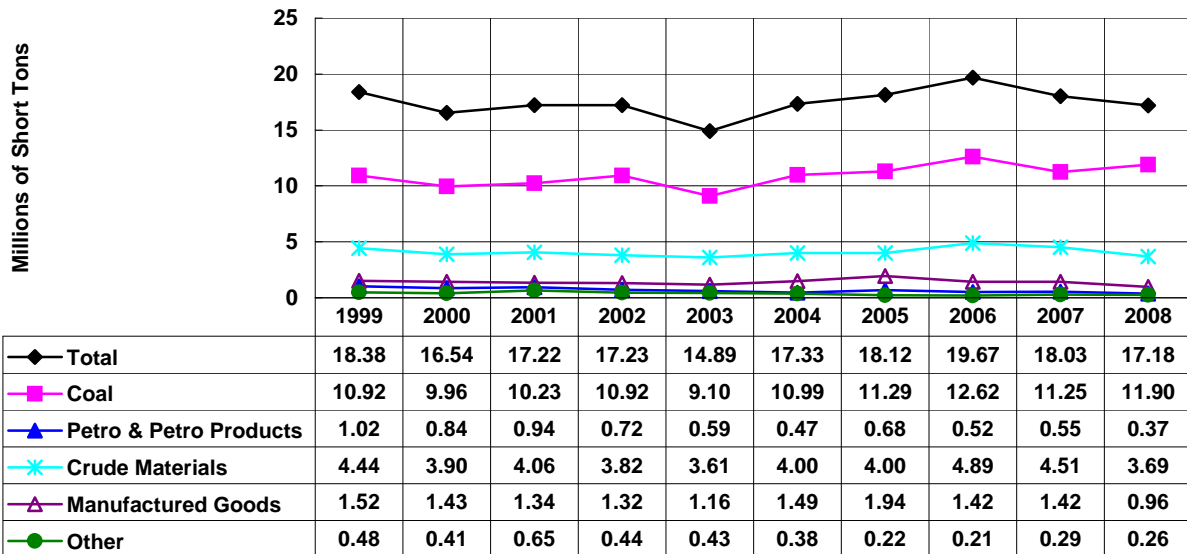
*Preliminary as of September 10, 2009.

Cumberland River - Downbound 1999-2008*, Millions of Short Tons, By Commodity



*Preliminary as of September 10, 2009.

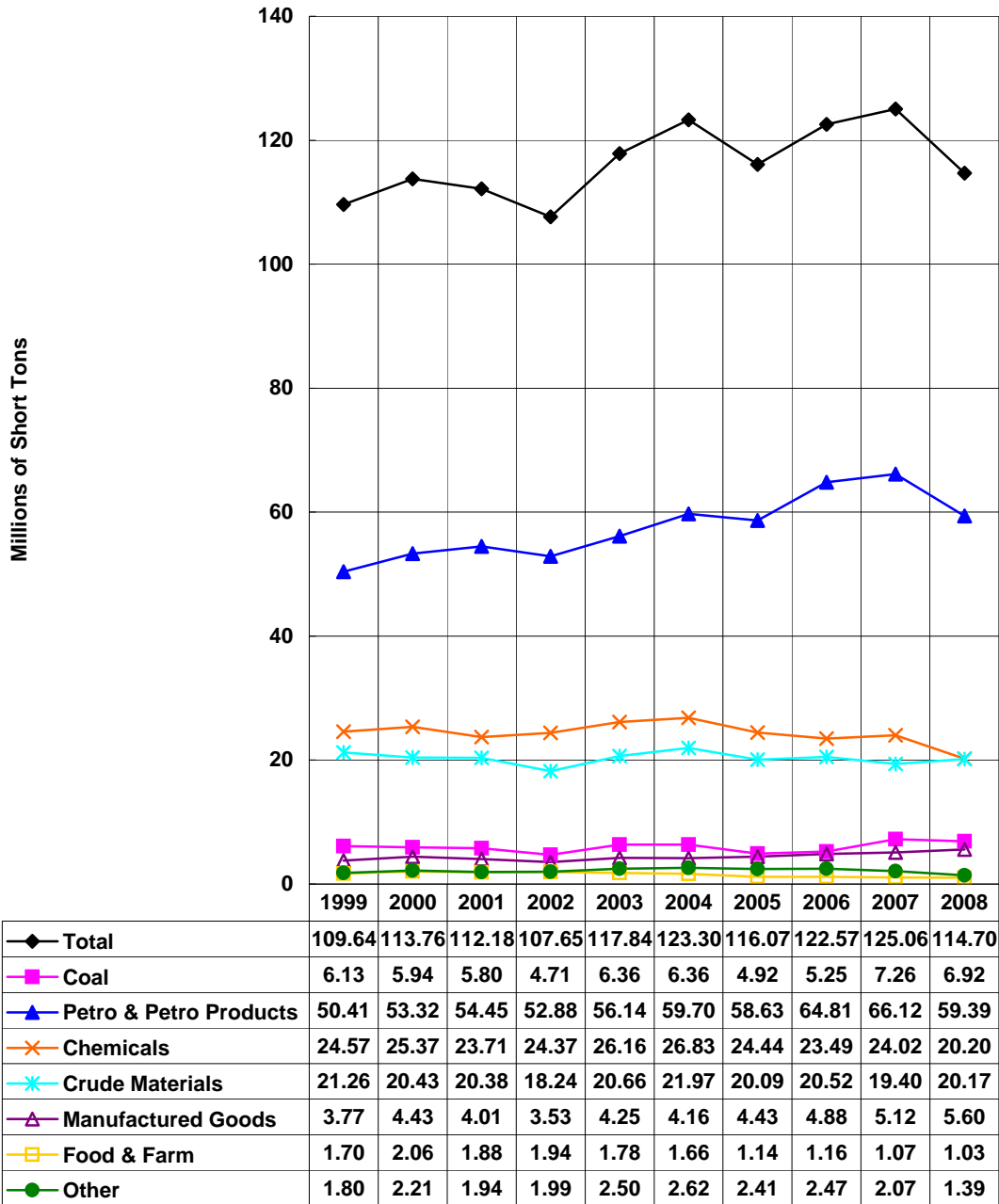
Cumberland River - Upbound 1999-2008*, Millions of Short Tons, By Commodity



*Preliminary as of September 10, 2009.

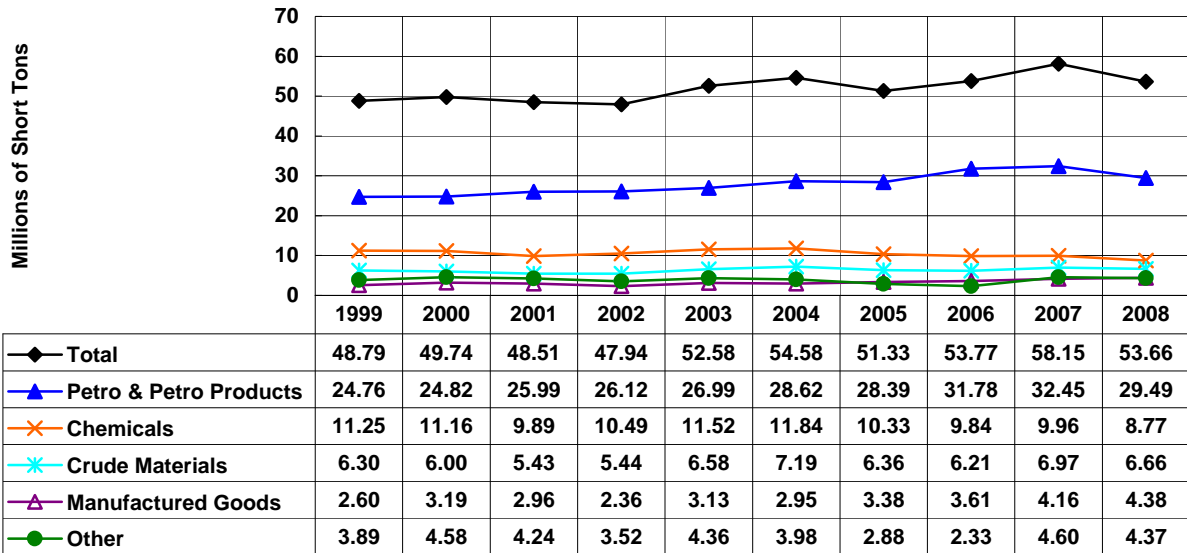
Gulf Intracoastal Waterway Totals

1999-2008*, Millions of Short Tons, By Commodity



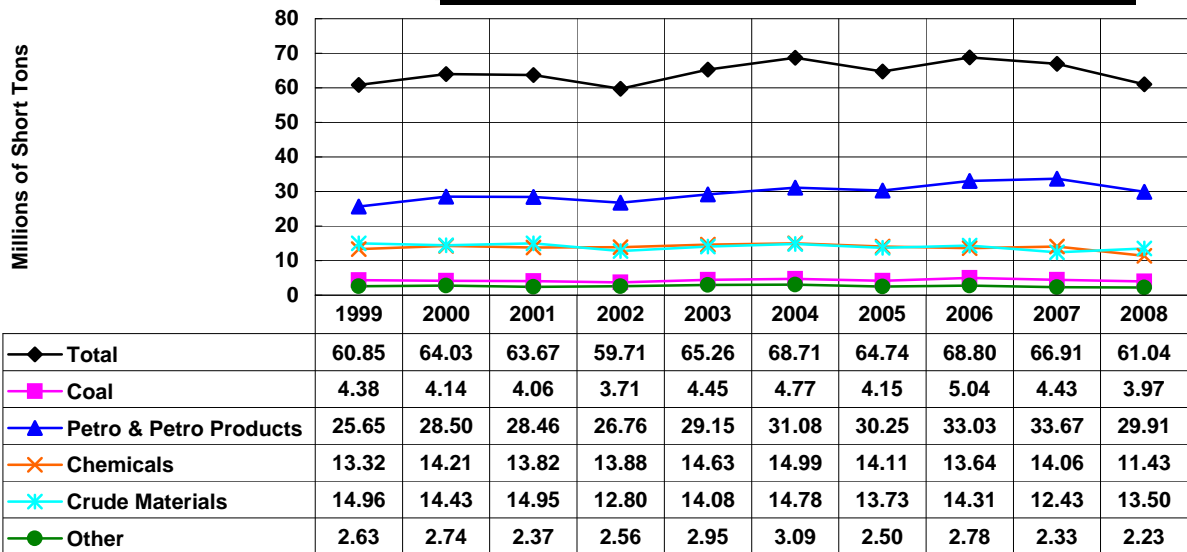
*Preliminary as of September 10, 2009.
Includes coastwise tonnage.

Gulf Intracoastal Waterway Westbound 1999-2008*, Millions of Short Tons, By Commodity



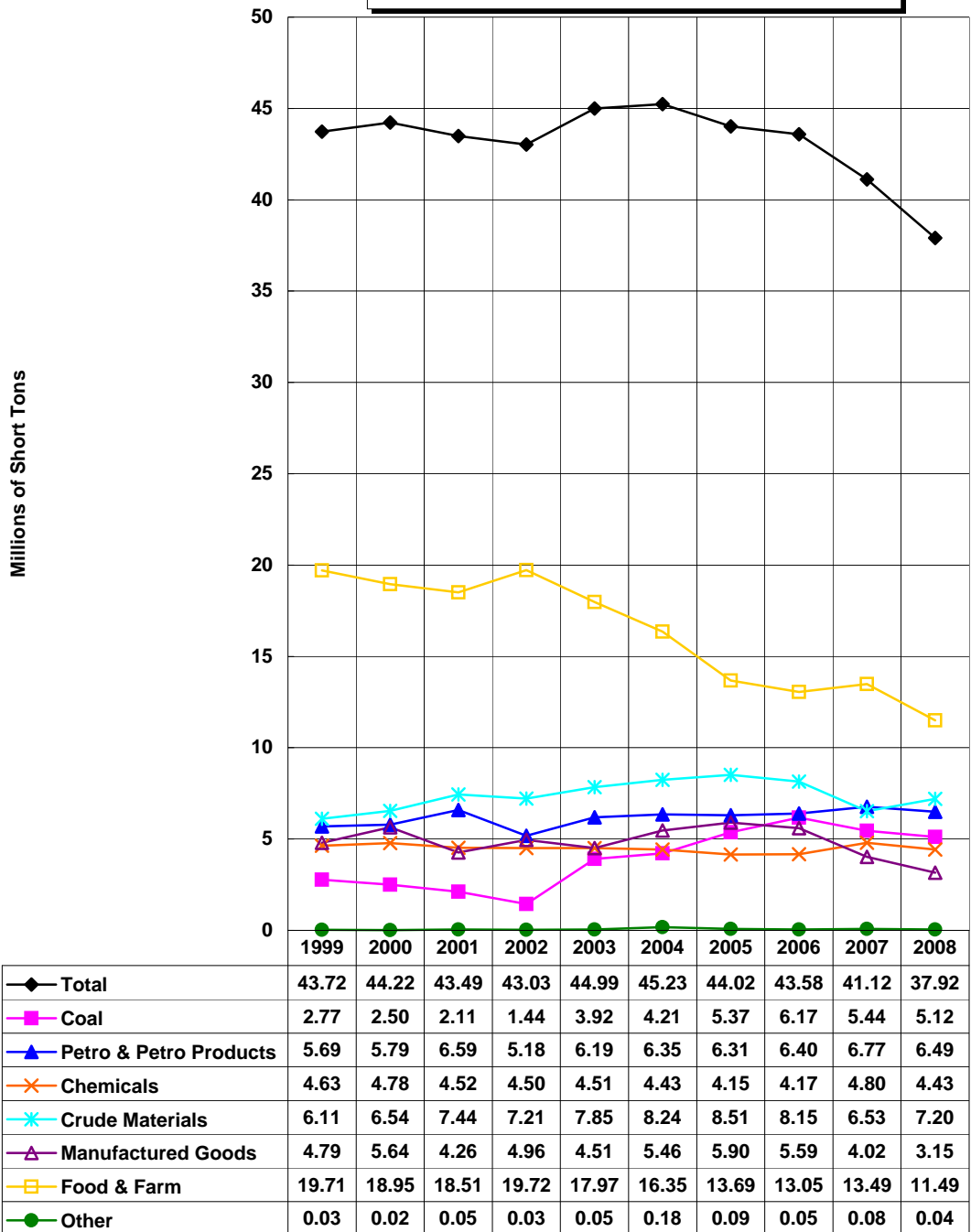
*Preliminary as of September 10, 2009.
Includes coastwise tonnage.

Gulf Intracoastal Waterway Eastbound 1999-2008*, Millions of Short Tons, By Commodity



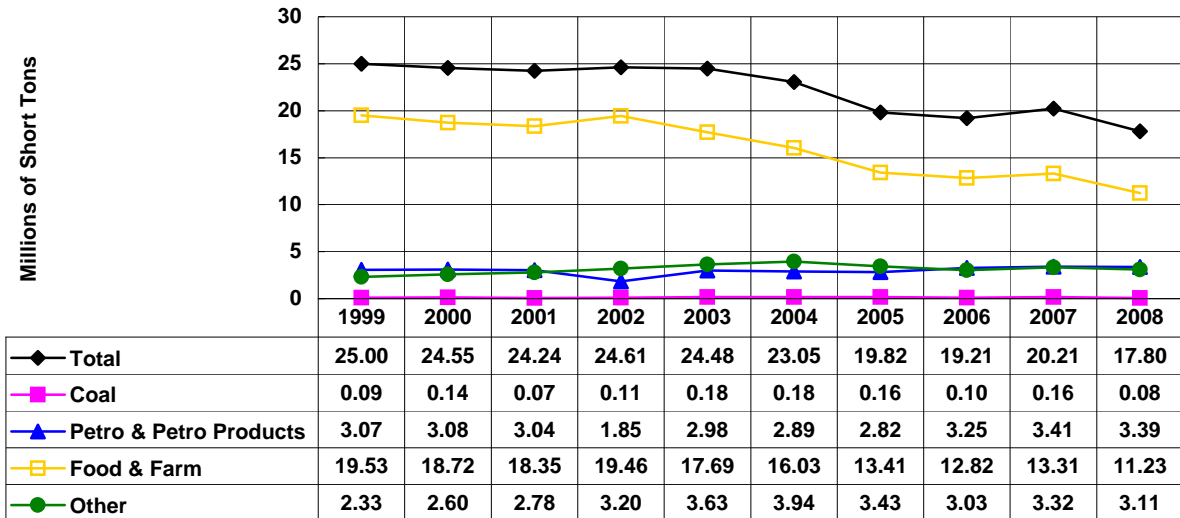
*Preliminary as of September 10, 2009.
Includes coastwise tonnage.

Illinois Waterway - Totals
1999-2008*, Millions of Short Tons, By Commodity



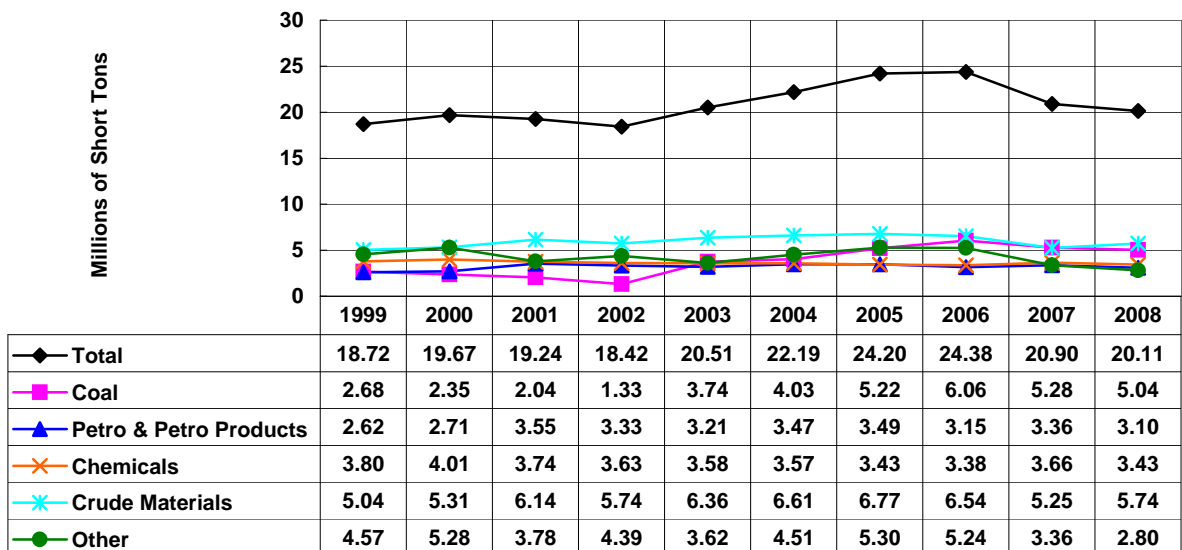
*Preliminary as of September 10, 2009.

Illinois Waterway - Downbound 1999-2008*, Millions of Short Tons, By Commodity



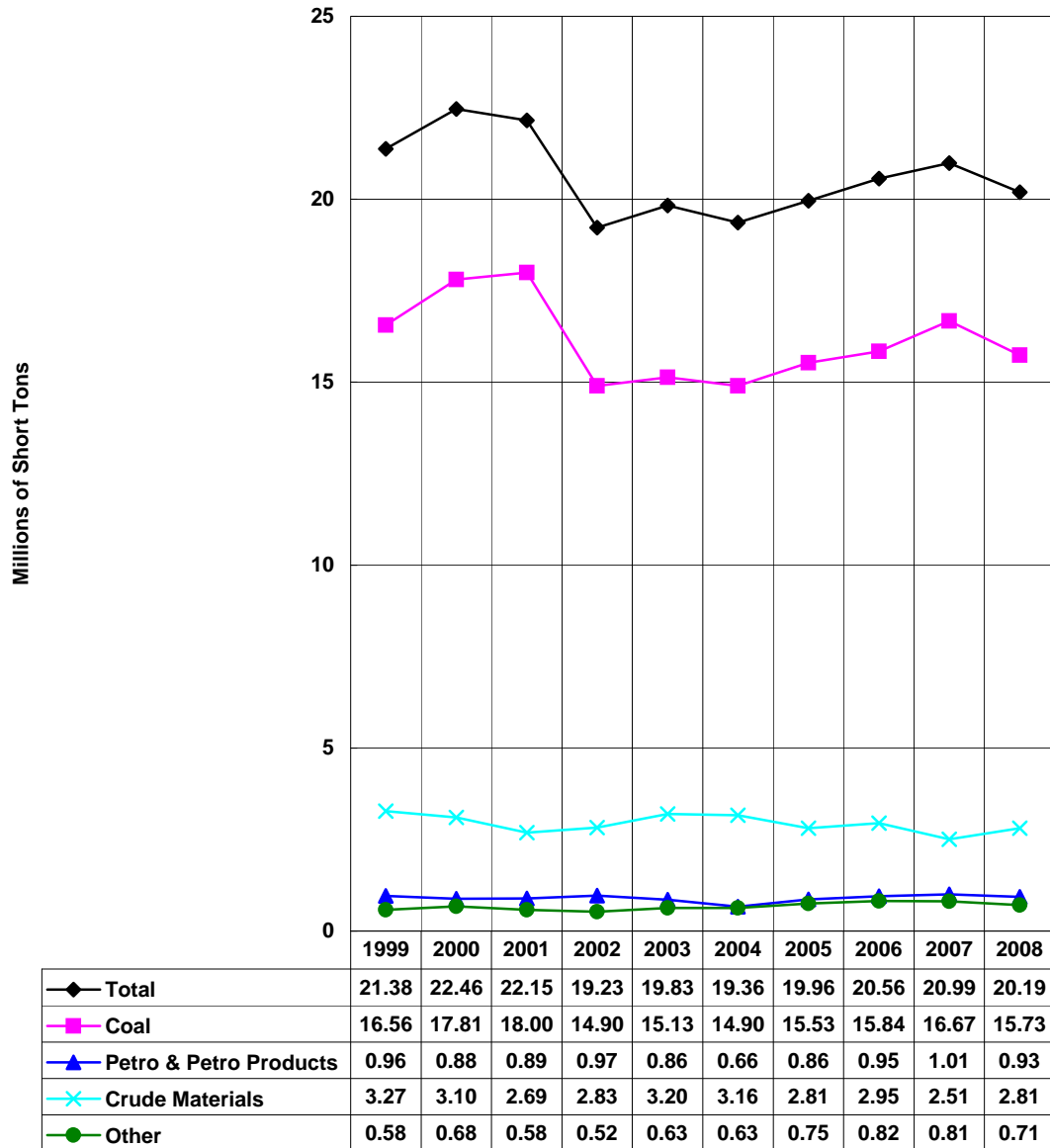
*Preliminary as of September 10, 2009.

Illinois Waterway - Upbound 1999-2008*, Millions of Short Tons, By Commodity



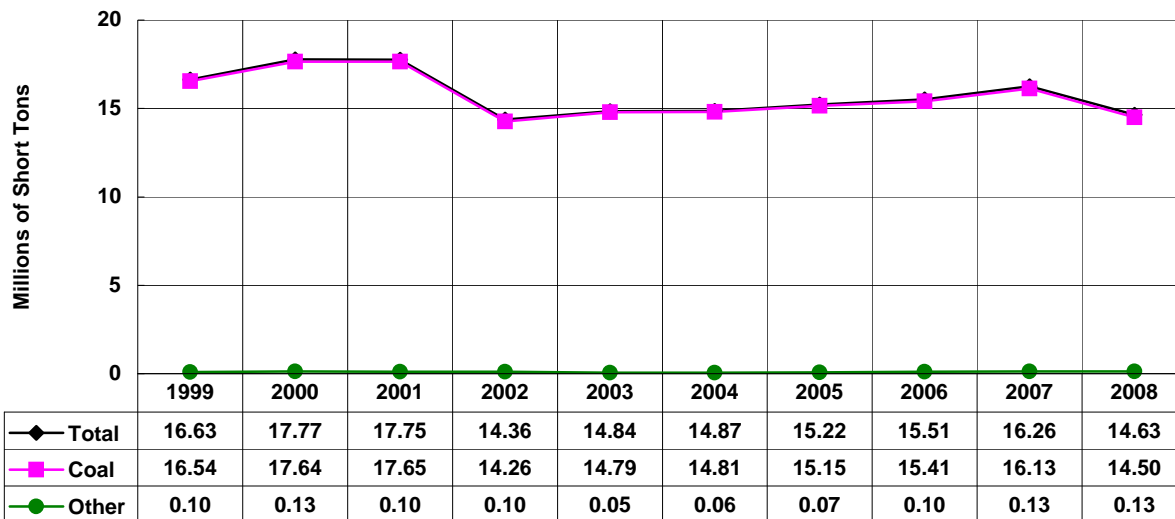
*Preliminary as of September 10, 2009.

Kanawha River - Totals
1999-2008*, Millions of Short Tons, By Commodity



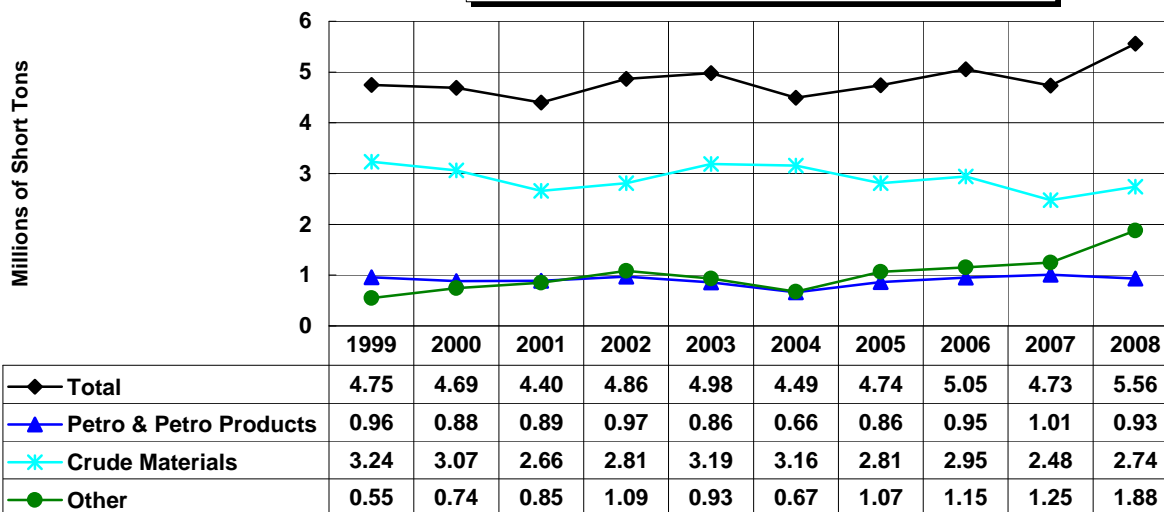
*Preliminary as of September 10, 2009.

Kanawha River - Downbound 1999-2008*, Millions of Short Tons, By Commodity



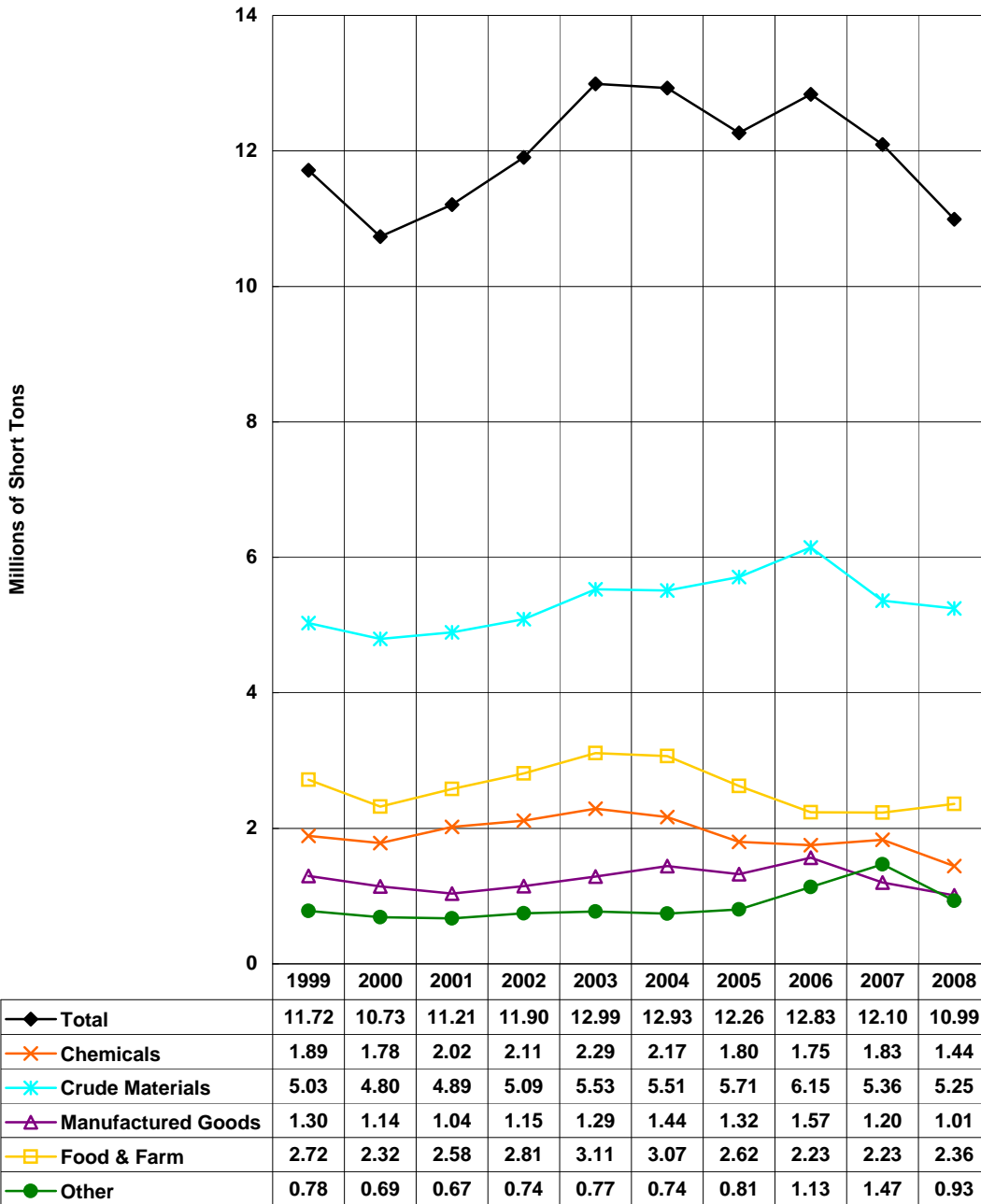
*Preliminary as of September 10, 2009.

Kanawha River - Upbound 1999-2008*, Millions of Short Tons, By Commodity



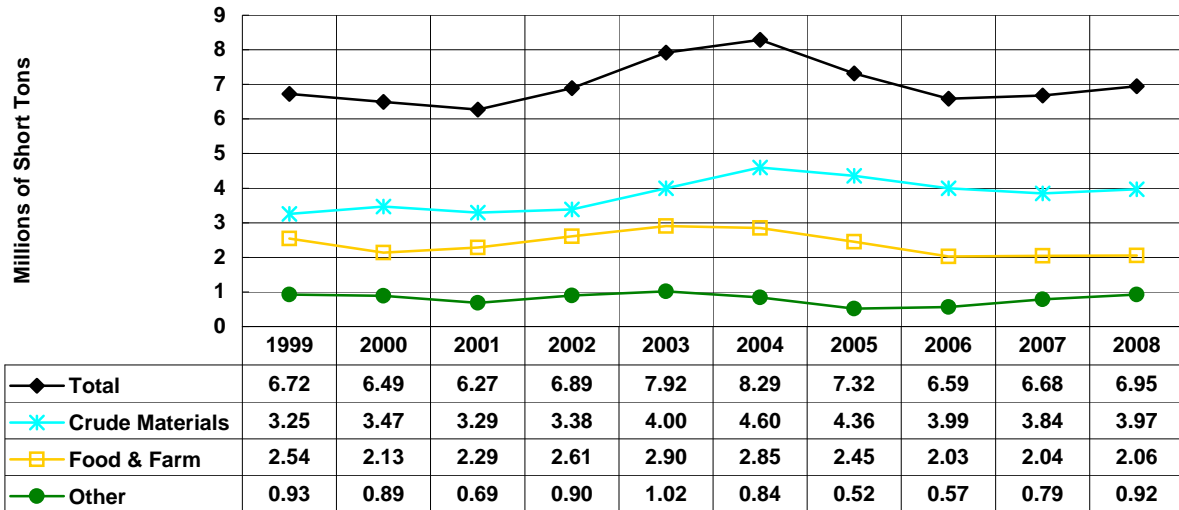
*Preliminary as of September 10, 2009.

McClellan-Kerr Waterway - Totals 1999-2008*, Millions of Short Tons, By Commodity



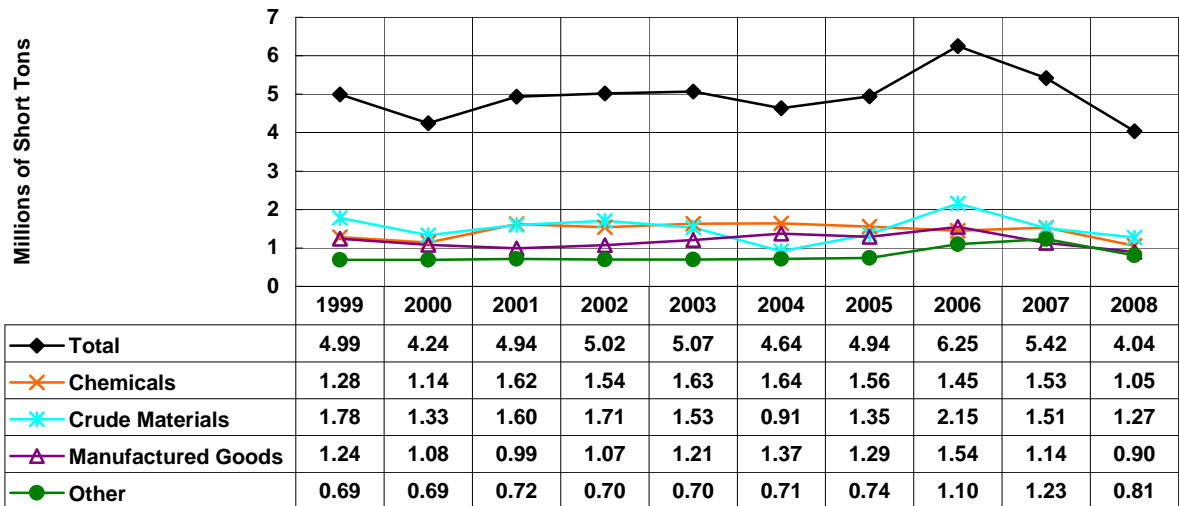
*Preliminary as of September 10, 2009.

McClellan-Kerr Waterway - Downbound 1999-2008*, Millions of Short Tons, By Commodity



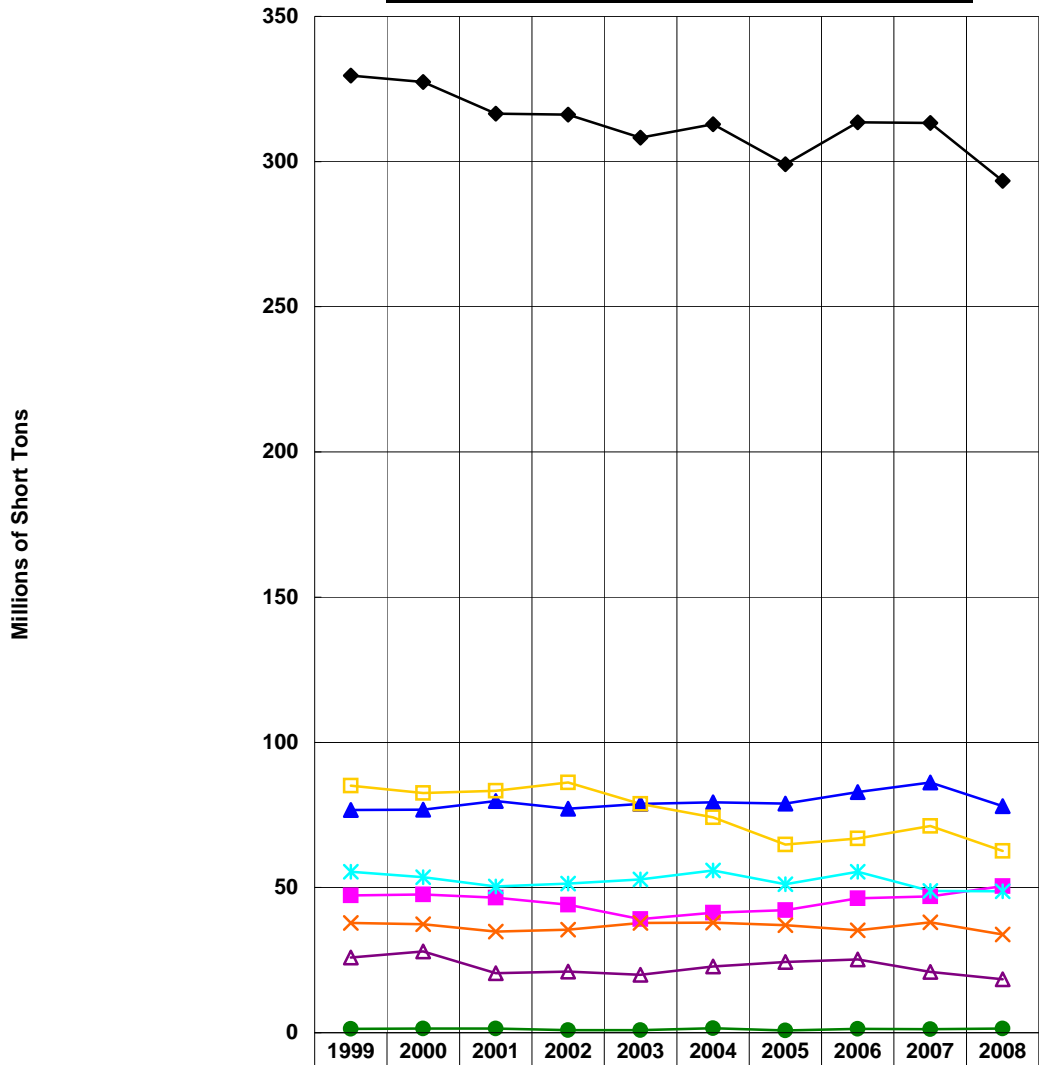
*Preliminary as of September 10, 2009.

McClellan-Kerr Waterway - Upbound 1999-2008*, Millions of Short Tons, By Commodity



*Preliminary as of September 10, 2009.

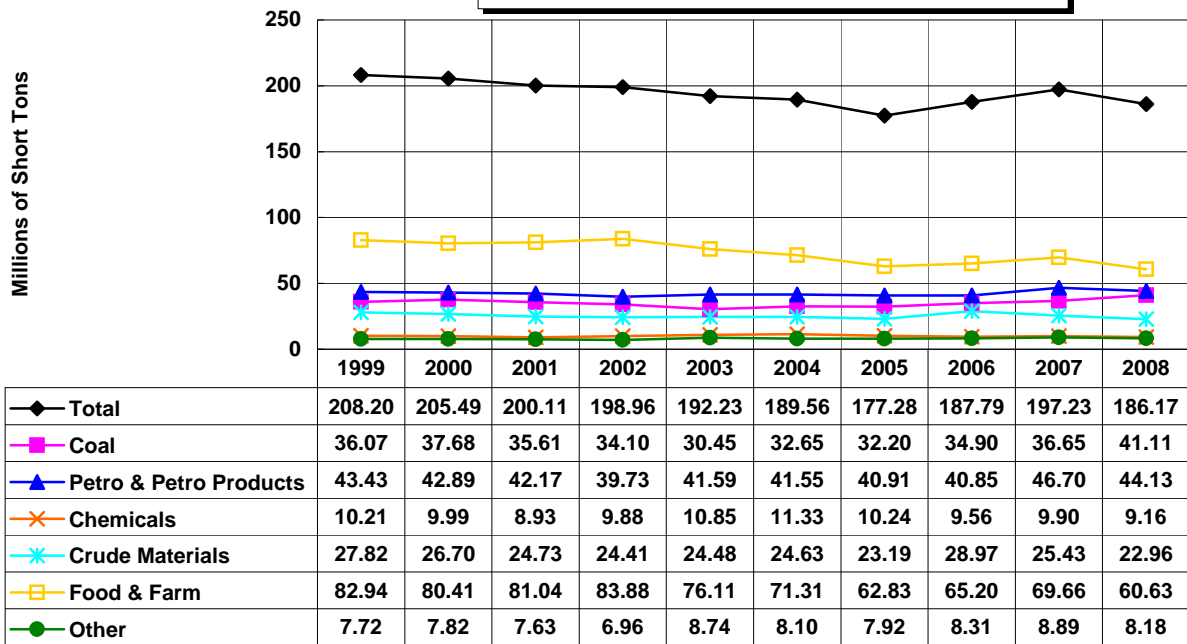
Mississippi River - Totals 1999-2008*, Millions of Short Tons, By commodity



◆ Total	329.64	327.40	316.55	316.21	308.21	312.81	299.14	313.51	313.31	293.38
■ Coal	47.28	47.65	46.46	44.09	39.08	41.31	42.20	46.30	47.00	50.44
▲ Petro & Petro Products	76.70	76.83	79.75	77.16	78.83	79.33	78.93	82.92	86.13	78.03
✕ Chemicals	37.79	37.38	34.79	35.52	37.81	37.88	37.02	35.24	38.06	33.86
✱ Crude Materials	55.47	53.59	50.36	51.38	52.81	55.85	51.12	55.49	48.79	48.69
△ Manufactured Goods	25.93	27.97	20.45	21.02	20.00	22.76	24.40	25.28	20.97	18.44
□ Food & Farm	85.12	82.59	83.28	86.15	78.76	74.15	64.76	66.92	71.17	62.56
● Other	1.35	1.39	1.46	0.89	0.92	1.53	0.72	1.36	1.20	1.38

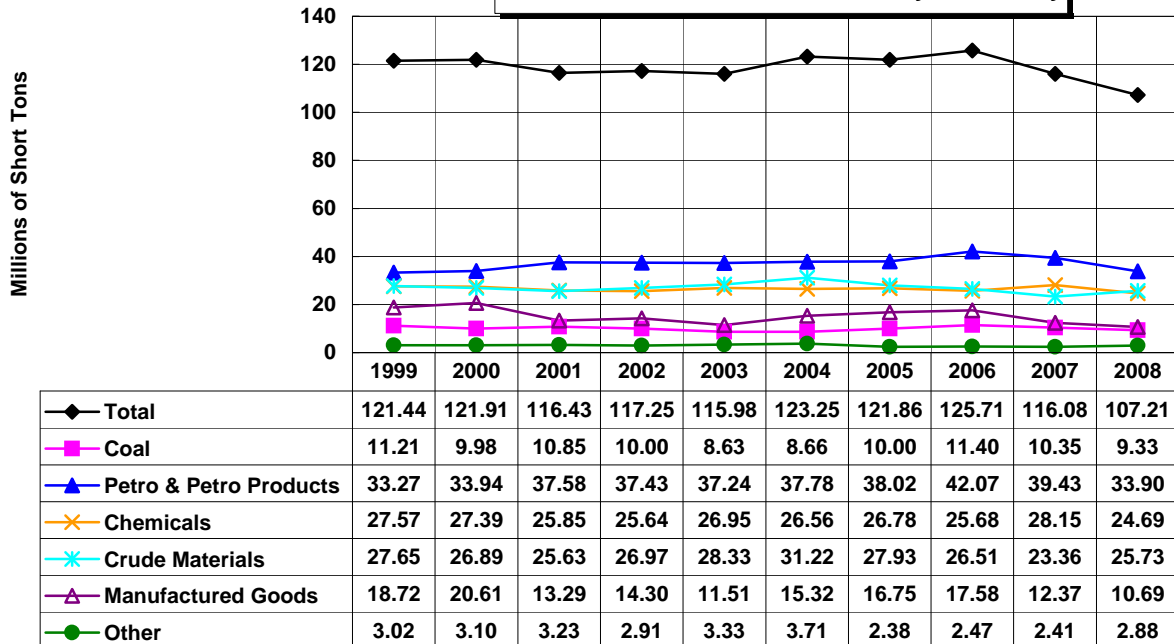
*Preliminary as of September 10, 2009.
Domestic tonnage only (including coastwise).

Mississippi River - Downbound 1999-2008*, Millions of Short Tons, By Commodity



*Preliminary as of September 10, 2009.
Domestic tonnage only (including coastwise).

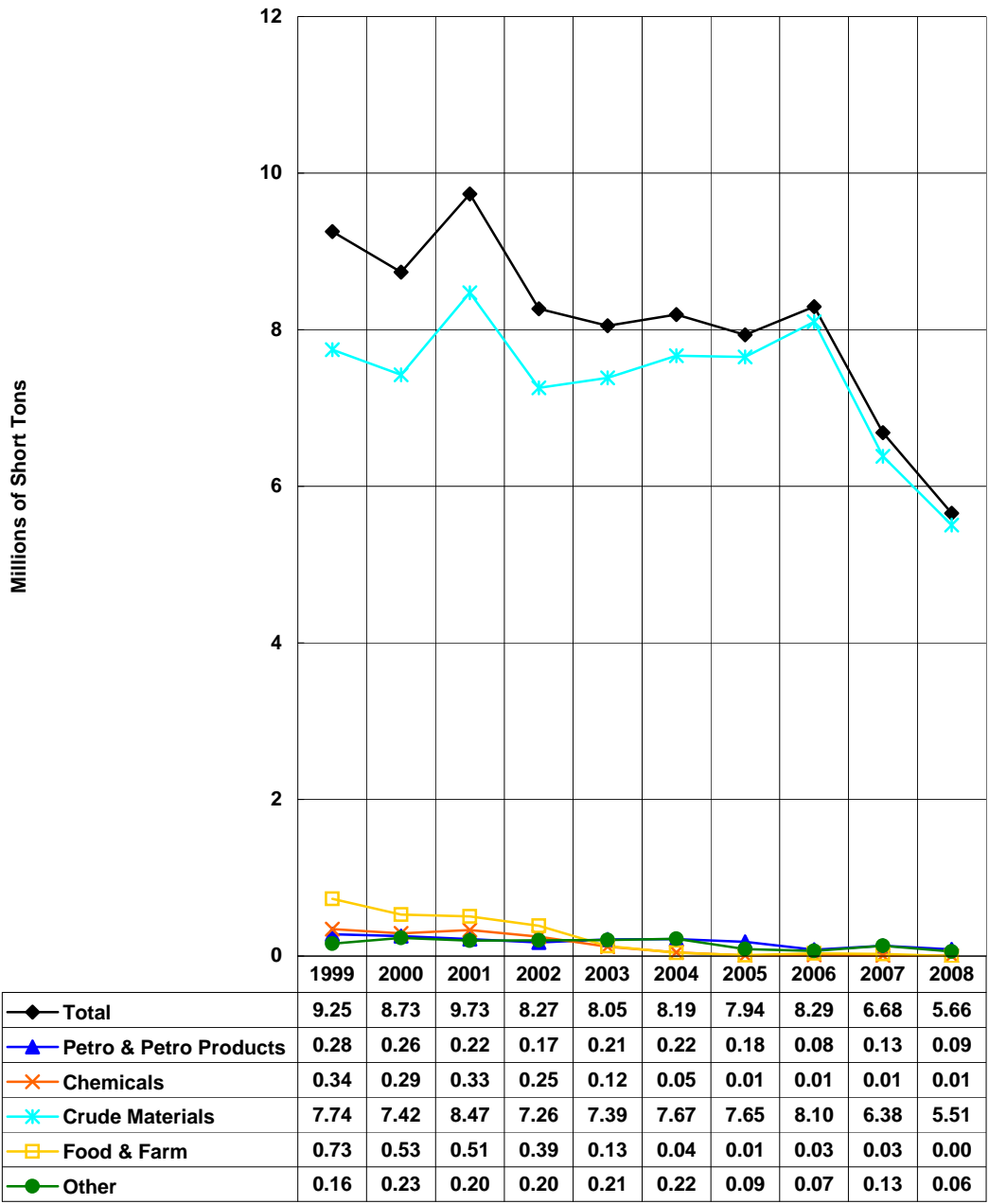
Mississippi River - Upbound 1999-2008*, Millions of Short Tons, By Commodity



*Preliminary as of September 10, 2009.
Domestic tonnage only (including coastwise).

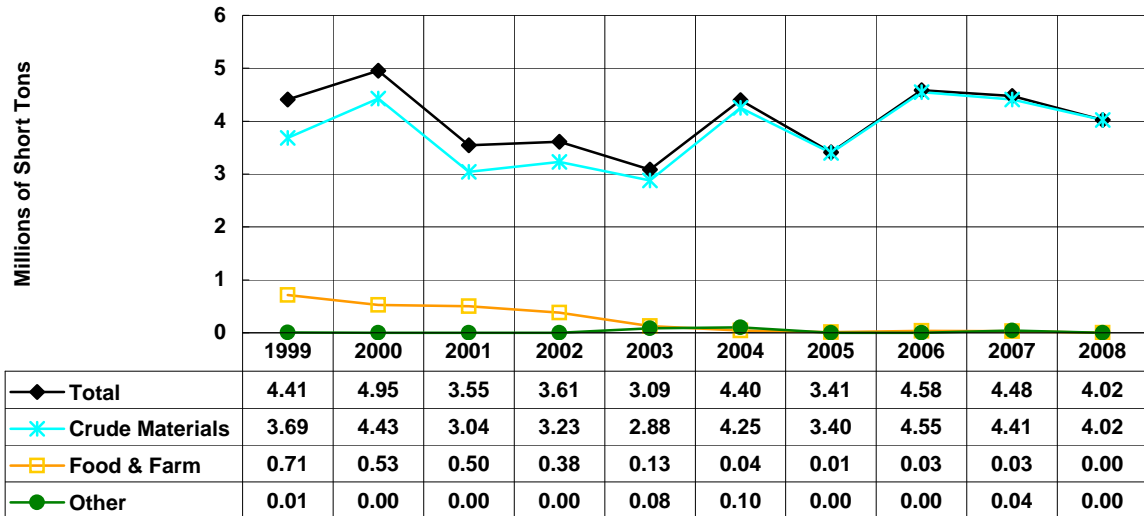
Missouri River Totals

1999-2008*, Millions of Short Tons, By Commodity



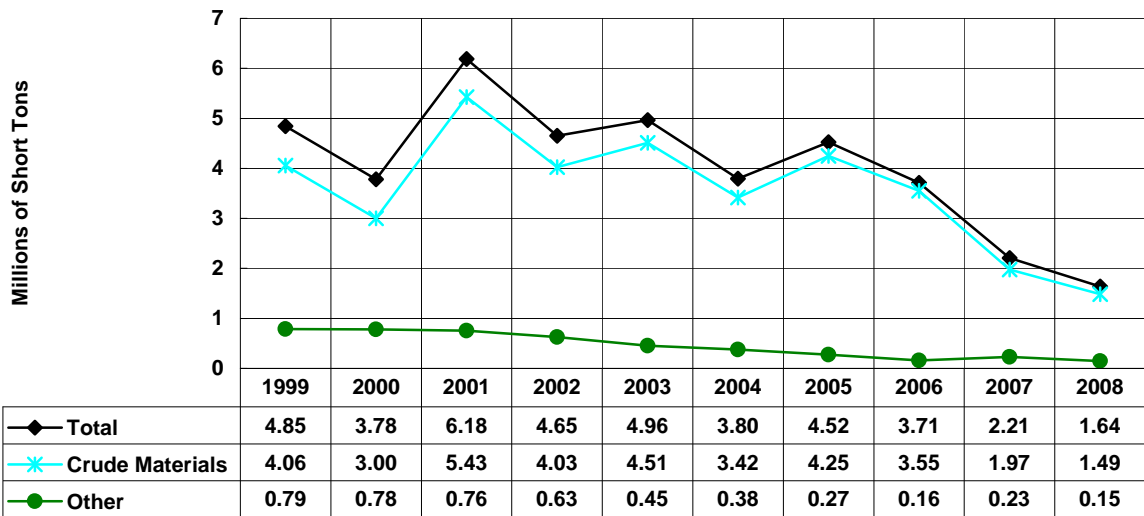
*Preliminary as of September 10, 2009.

Missouri River Downbound 1999-2008*, Millions of Short Tons, By Commodity



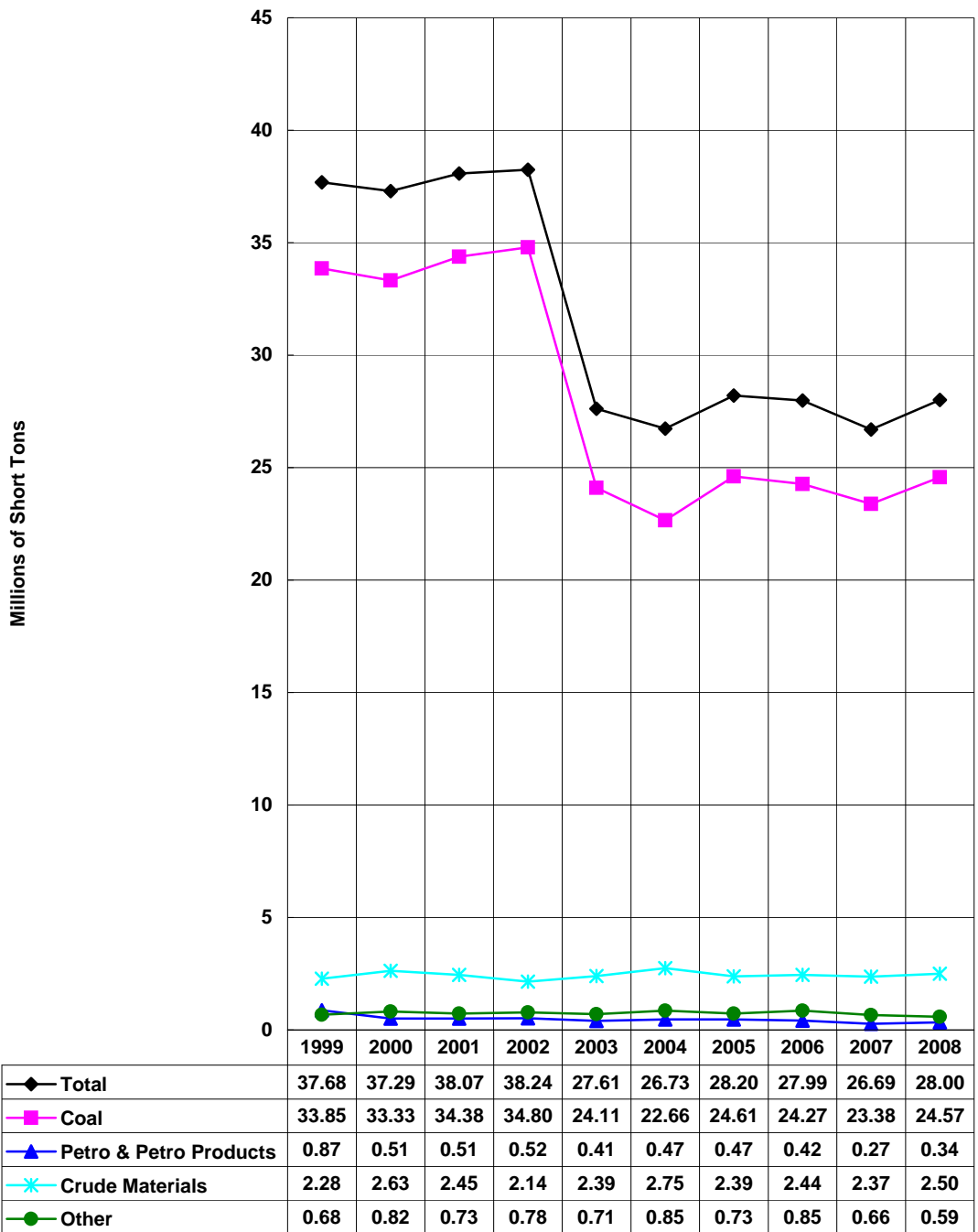
*Preliminary as of September 10, 2009.

Missouri River Upbound 1999-2008*, Millions of Short Tons, By Commodity



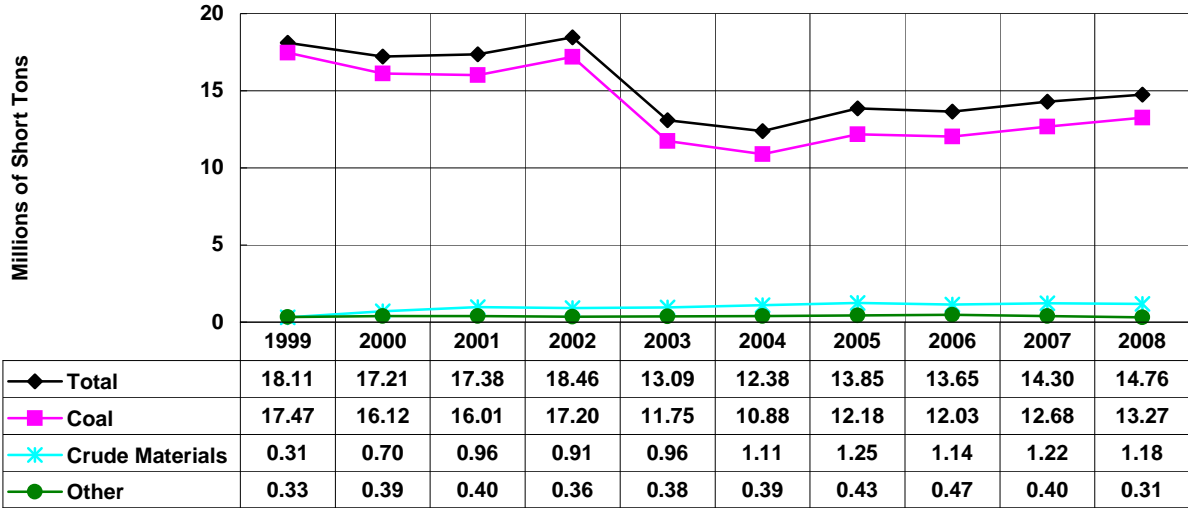
*Preliminary as of September 10, 2009.

Monongahela River - Totals
1999-2008*, Millions of Short Tons, By Commodity



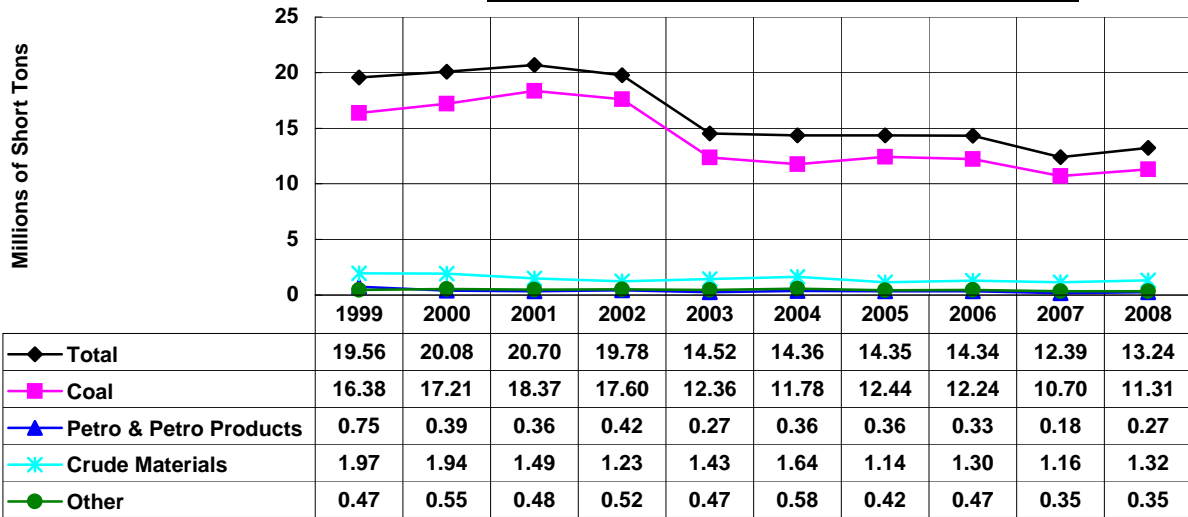
*Preliminary as of September 10, 2009.

Monongahela River - Downbound 1999-2008*, Millions of Short Tons, By Commodity



*Preliminary as of September 10, 2009.

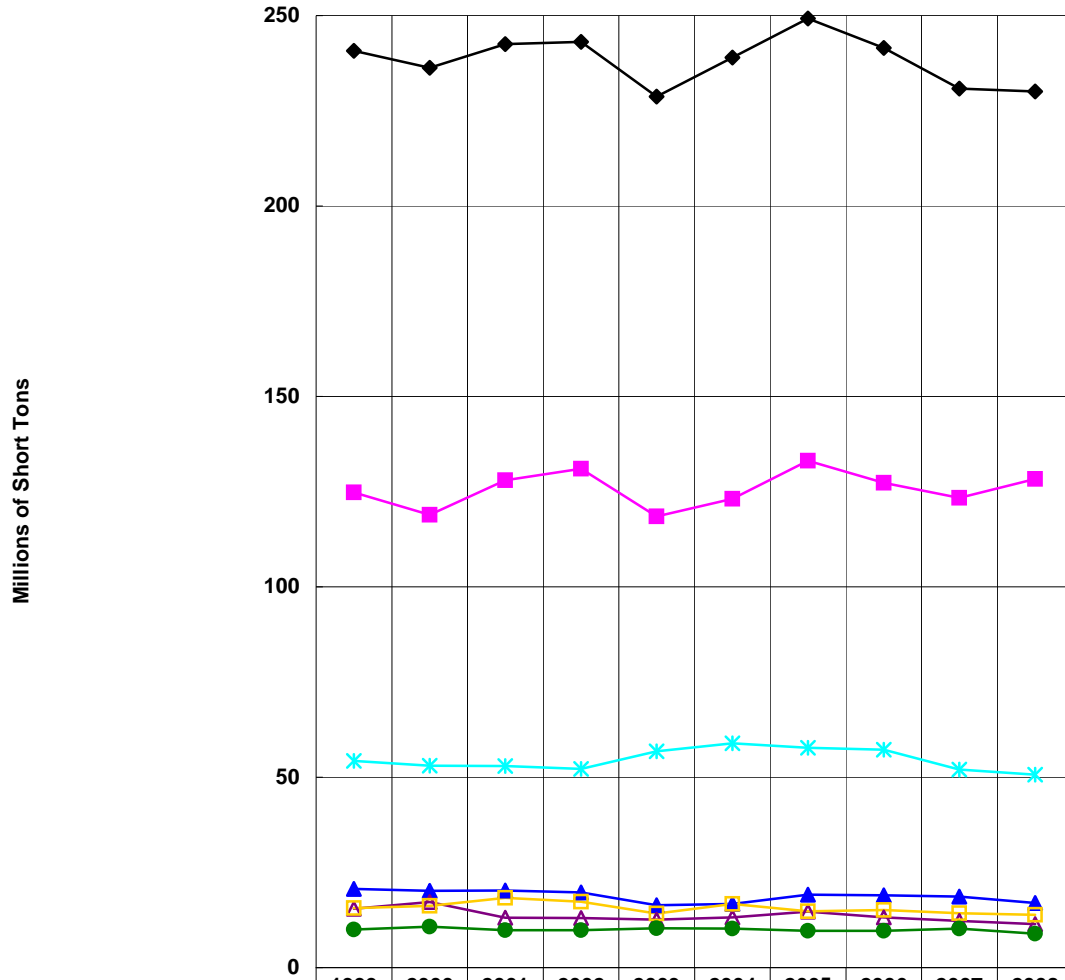
Monongahela River - Upbound 1999-2008*, Millions of Short Tons, By Commodity



*Preliminary as of September 10, 2009.

Ohio River - Totals

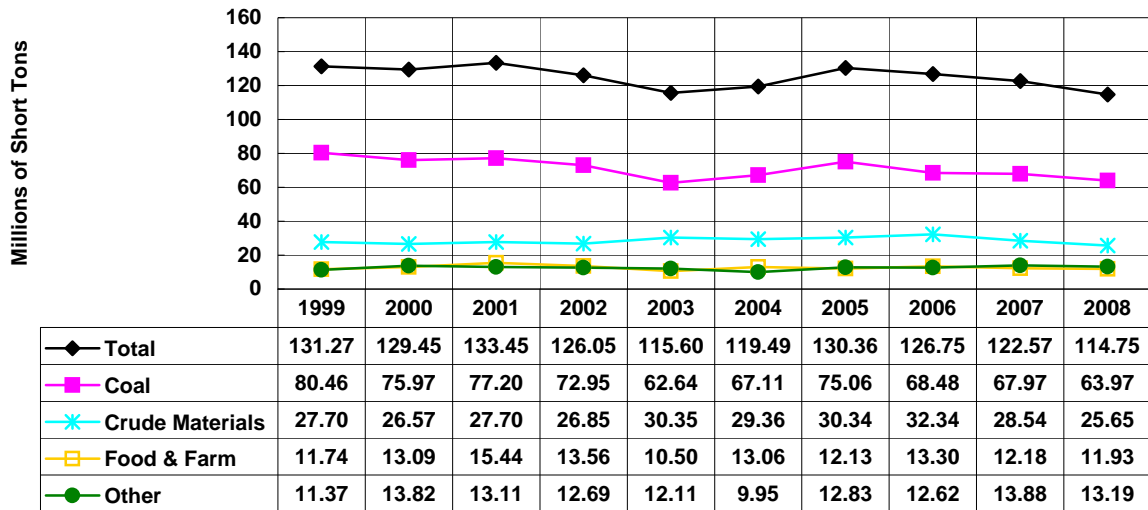
1999-2008*, Millions of Short Tons, By Commodity



	1999	2000	2001	2002	2003	2004	2005	2006	2007	2008
◆ Total	240.79	236.30	242.50	243.15	228.77	238.98	249.21	241.54	230.84	230.10
■ Coal	124.75	118.93	128.00	131.04	118.46	123.11	133.15	127.31	123.34	128.35
▲ Petro & Petro Products	20.64	20.19	20.28	19.75	16.38	16.76	19.17	18.98	18.70	16.96
* Crude Materials	54.28	53.02	52.93	52.22	56.85	58.94	57.75	57.21	52.05	50.69
▲ Manufactured Goods	15.49	17.19	13.08	13.00	12.58	13.19	14.70	13.21	12.26	11.40
▣ Food & Farm	15.60	16.23	18.34	17.33	14.17	16.74	14.78	15.14	14.29	13.83
● Other	10.02	10.73	9.86	9.81	10.34	10.25	9.67	9.68	10.21	8.87

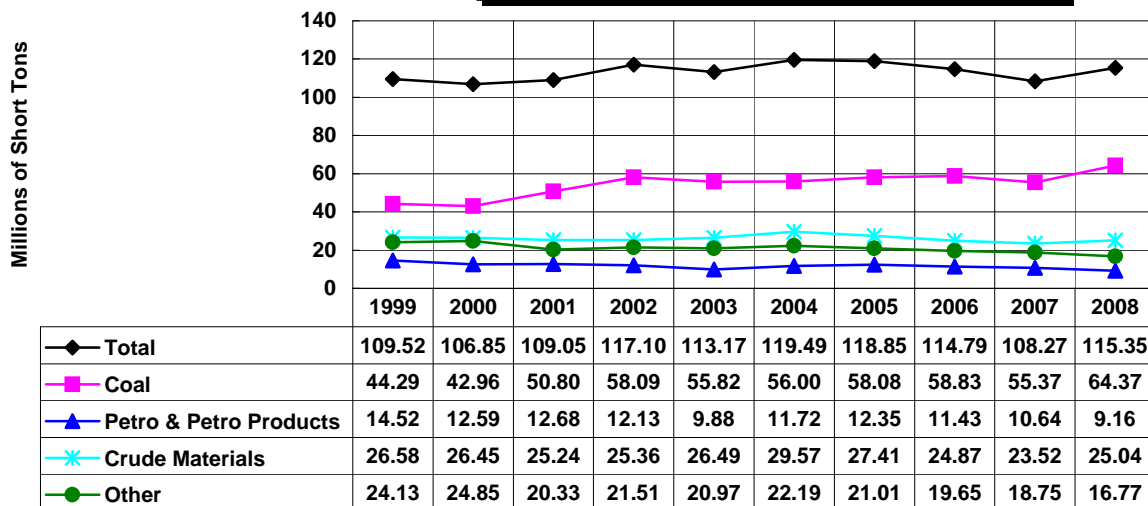
*Preliminary as of September 10, 2009.

Ohio River - Downbound 1999-2008*, Millions of Short Tons, By Commodity



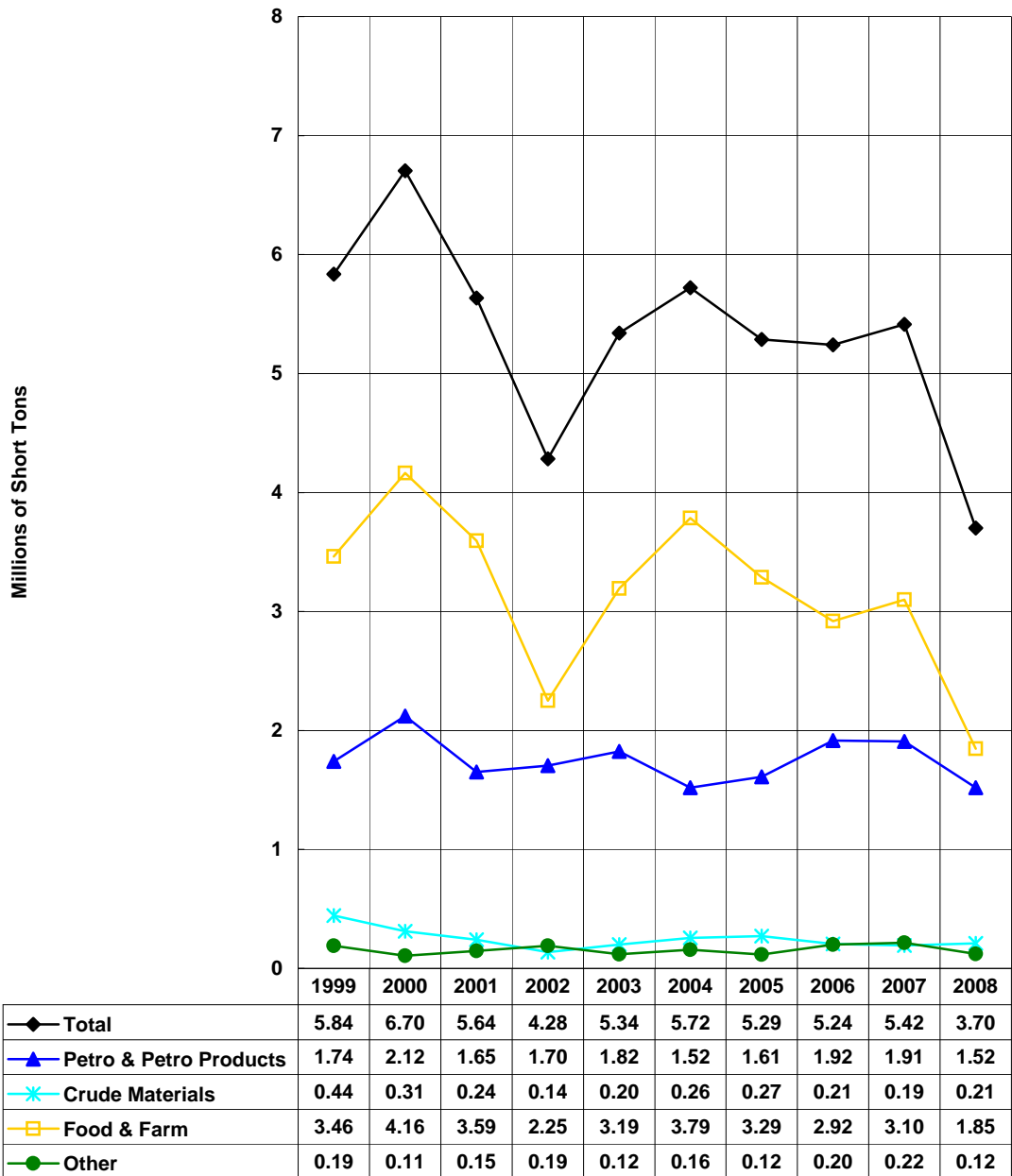
*Preliminary as of September 10, 2009.

Ohio River - Upbound 1999-2008*, Millions of Short Tons, By Commodity



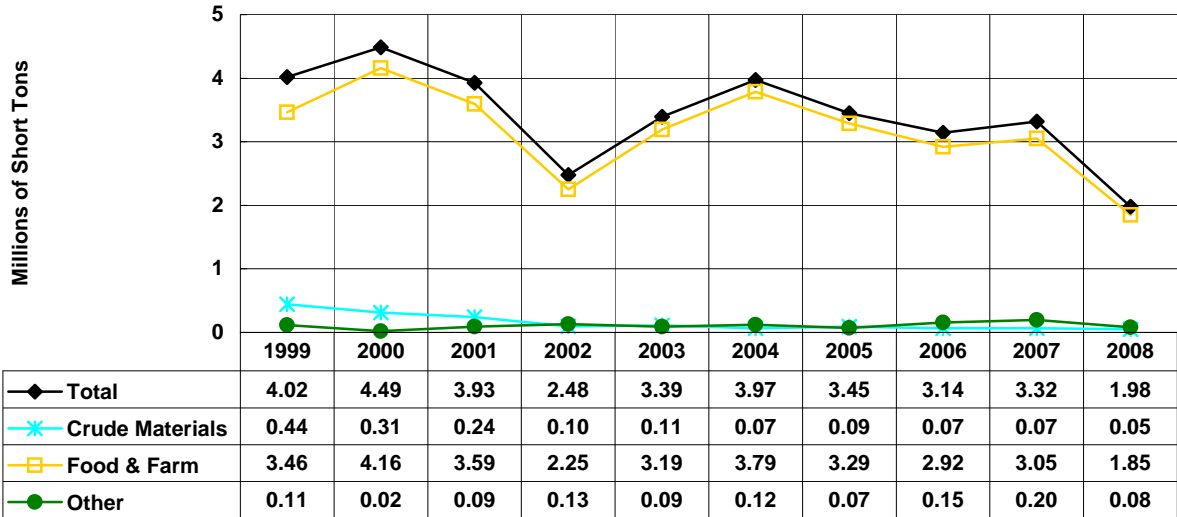
*Preliminary as of September 10, 2009.

Snake River - Totals 1999-2008*, Millions of Short Tons, By Commodity



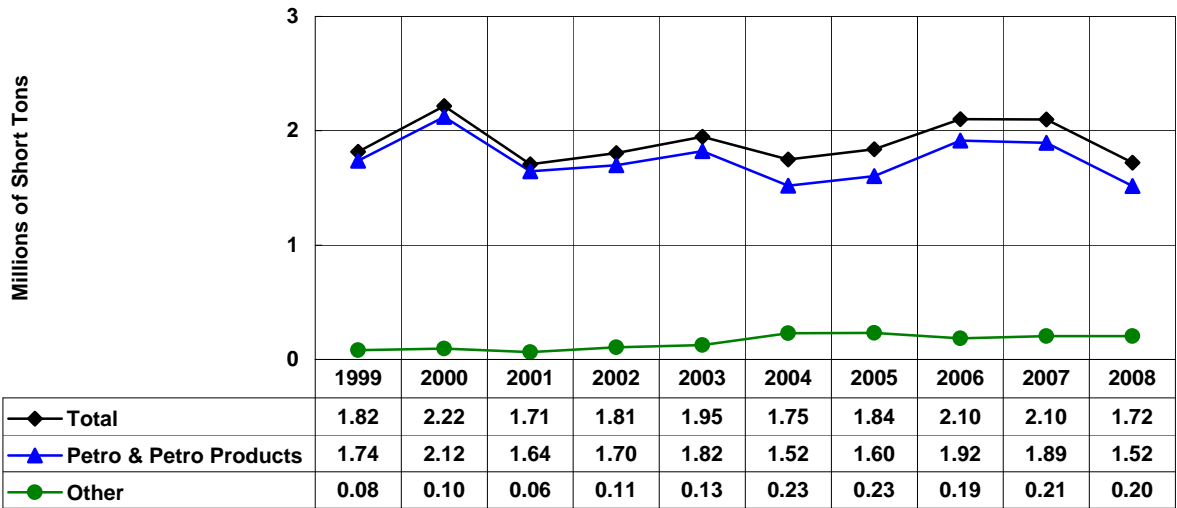
*Preliminary as of September 10, 2009.

Snake River - Downbound 1999-2008*, Millions of Short Tons, By Commodity



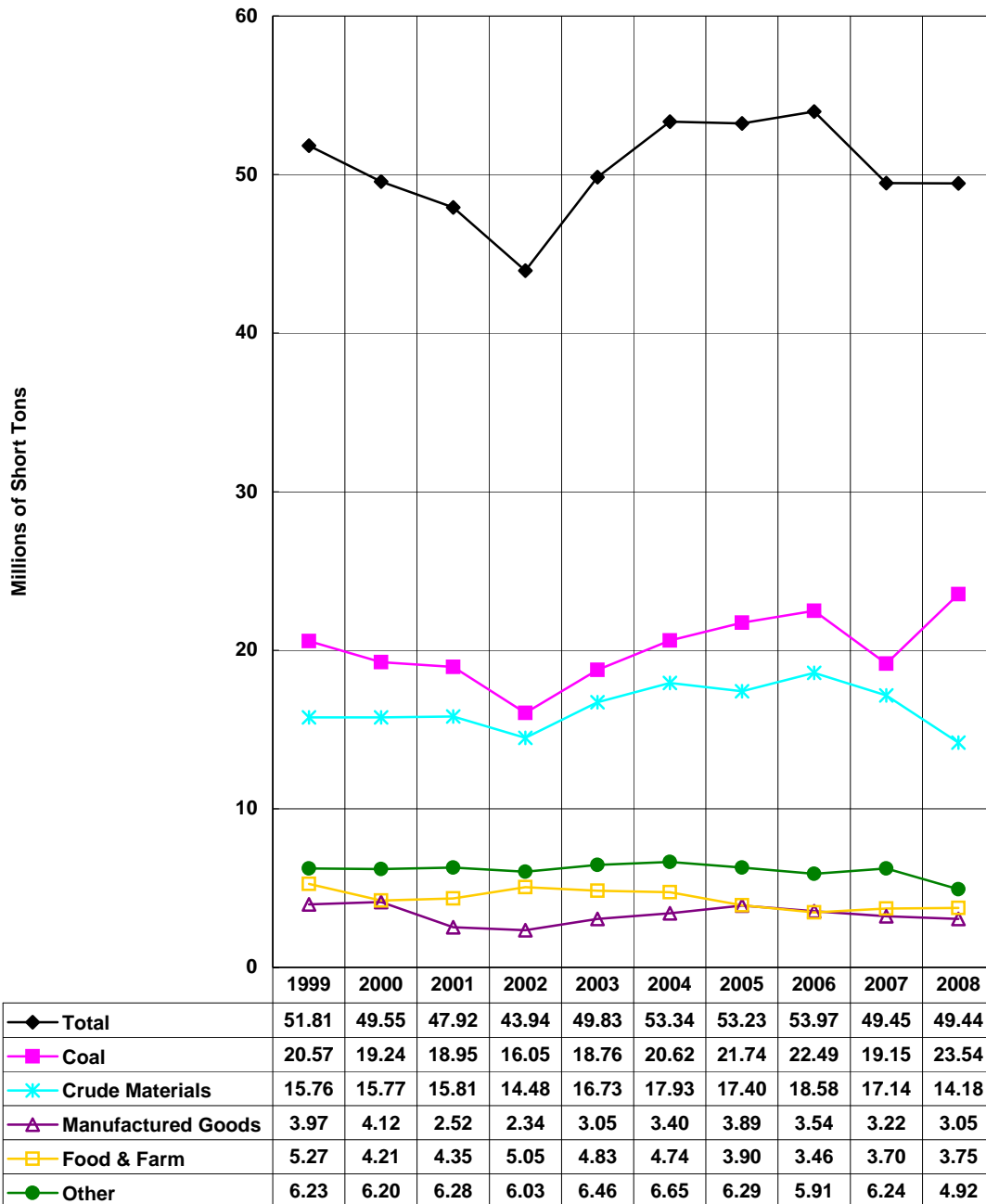
*Preliminary as of September 10, 2009.

Snake River - Upbound 1999-2008*, Millions of Short Tons, By Commodity



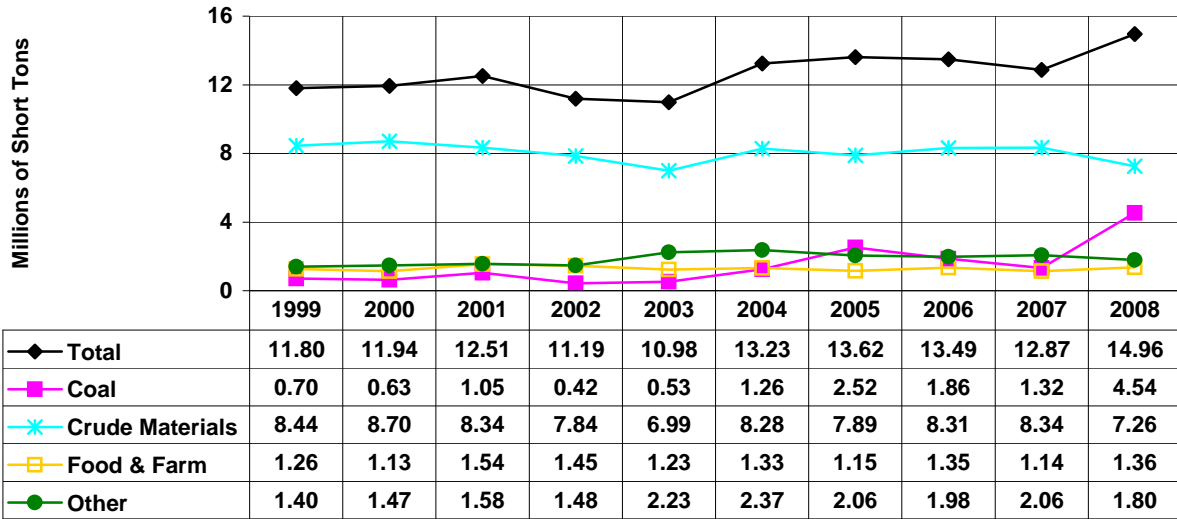
*Preliminary as of September 10, 2009.

Tennessee River - Totals 1999-2008*, Millions of Short Tons, By Commodity



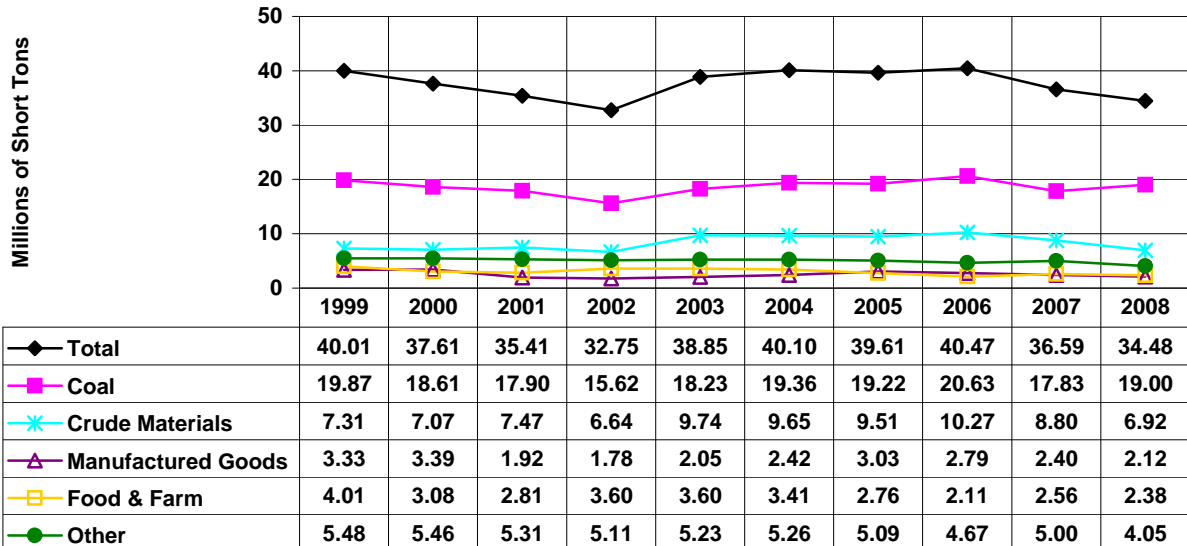
*Preliminary as of September 10, 2009.

Tennessee River - Downbound 1999-2008*, Millions of Short Tons, By Commodity



*Preliminary as of September 10, 2009.

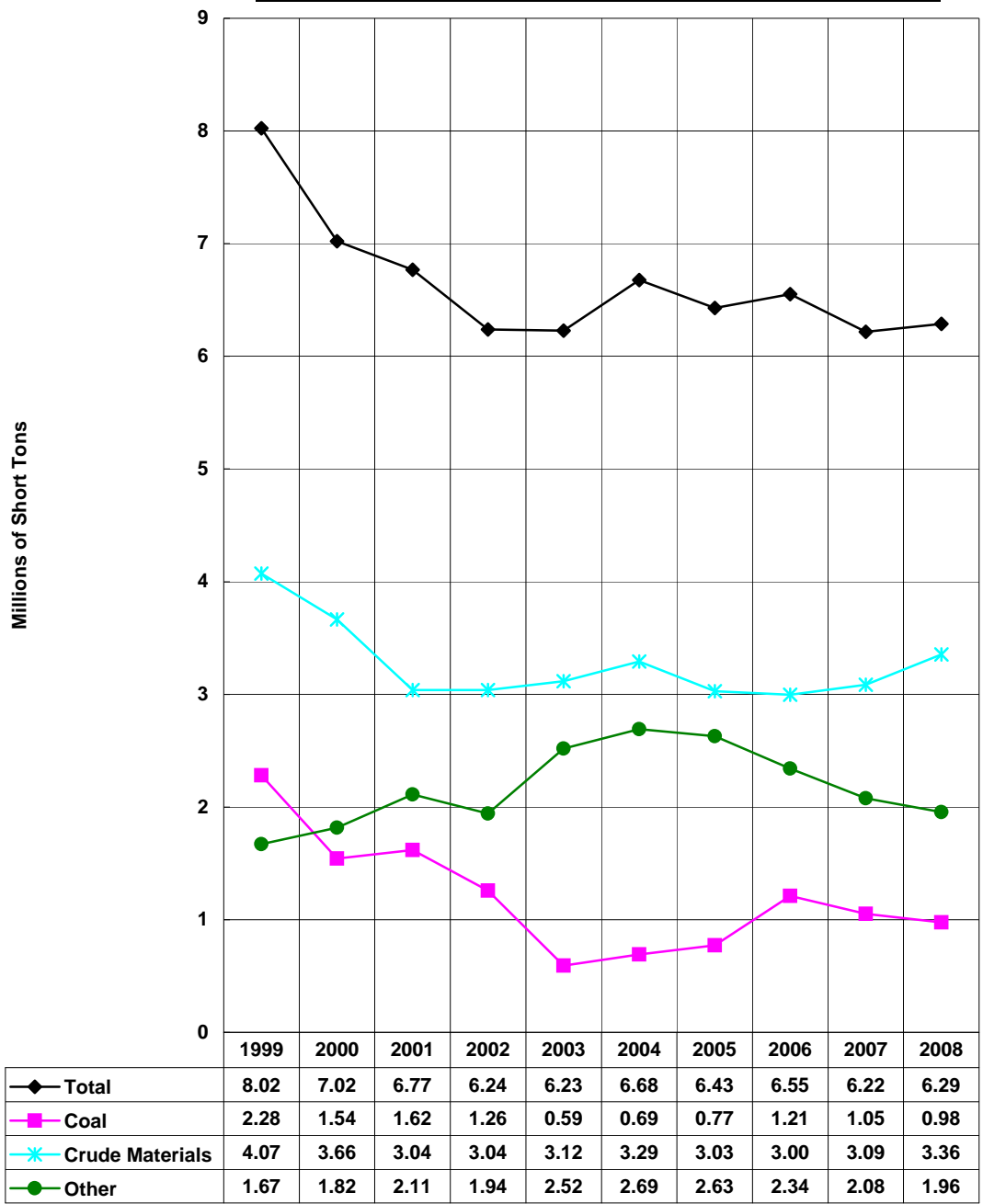
Tennessee River - Upbound 1999-2008*, Millions of Short Tons, By Commodity



*Preliminary as of September 10, 2009.

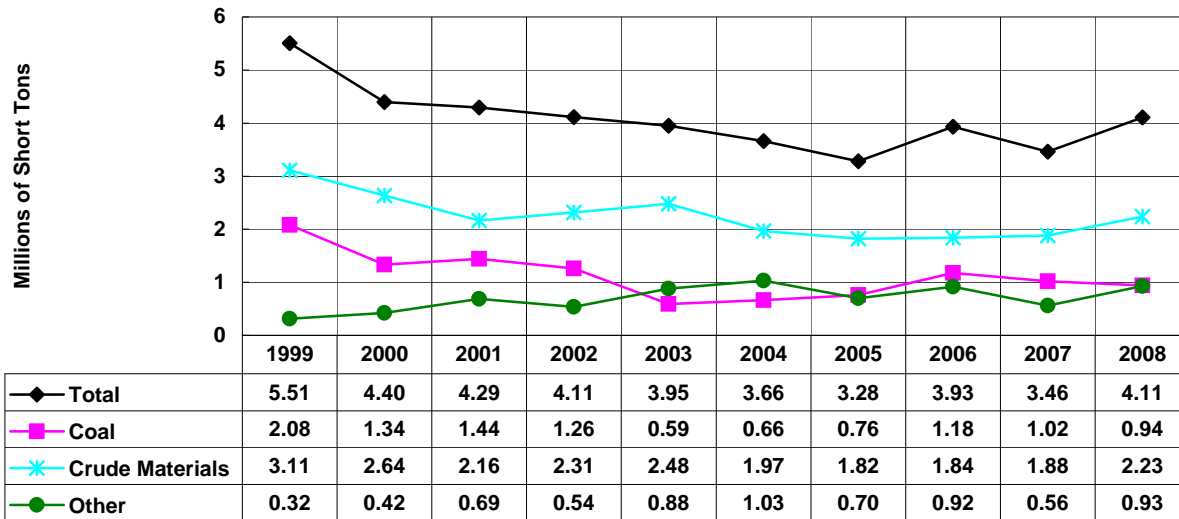
Tennessee-Tombigbee Waterway - Totals

1999-2008*, Millions of Short Tons, By Commodity



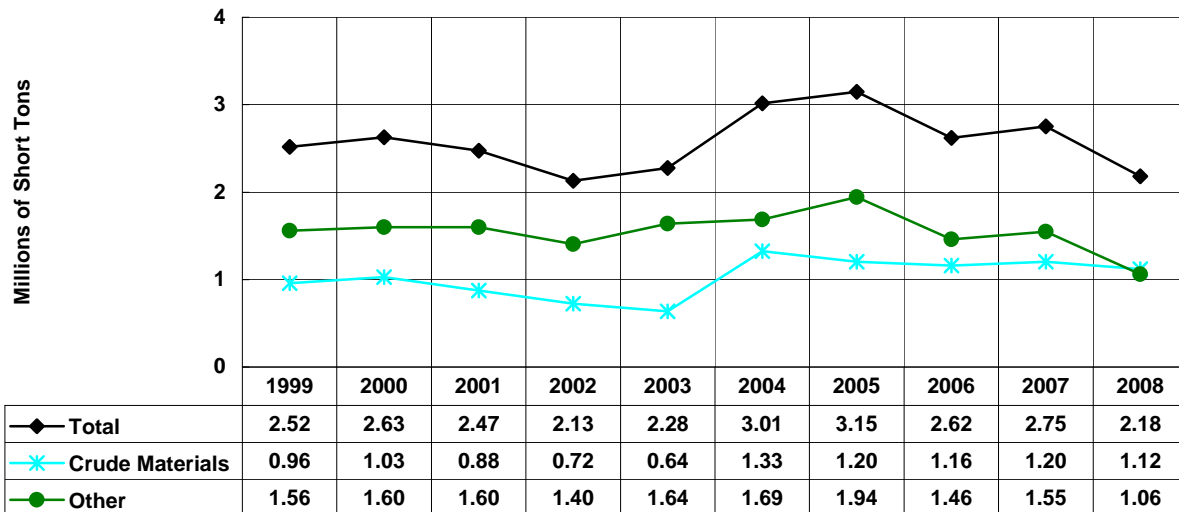
*Preliminary as of September 10, 2009.

Tennessee - Tombigbee Waterway
Southbound, 1999-2008*, Millions of Short Tons, By Commodity



*Preliminary as of September 10, 2009.

Tennessee - Tombigbee Waterway
Northbound, 1999-2008*, Millions of Short Tons, By Commodity



*Preliminary as of September 10, 2009.